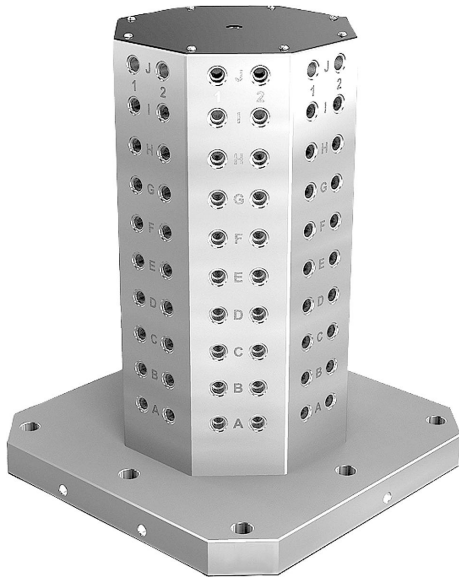


Clamping towers, grey cast iron, 8-sided, with grid holes

Item description/product images



Description

Material:

GJL 300.

Version:

Support and mounting surfaces precision machined

Note:

Grid spacing 50 ± 0.02 mm.

Clamping towers with grid holes are used on horizontal machining centres.

The alphanumerically labelled grid holes mean that the clamping elements can be assigned in a defined manner in the event of repeat setups.

The clamping towers conform to machine tables for machine tools acc. to DIN 55201 and JIS6337-1980.

Please order locating pins for positioning subplates on machine tables acc. to DIN 55201 separately.

Please order protection plugs to plug unused grid holes separately.

Ring bolts for hoisting are supplied.

Other dimensions available on request.

On request:

other dimensions.

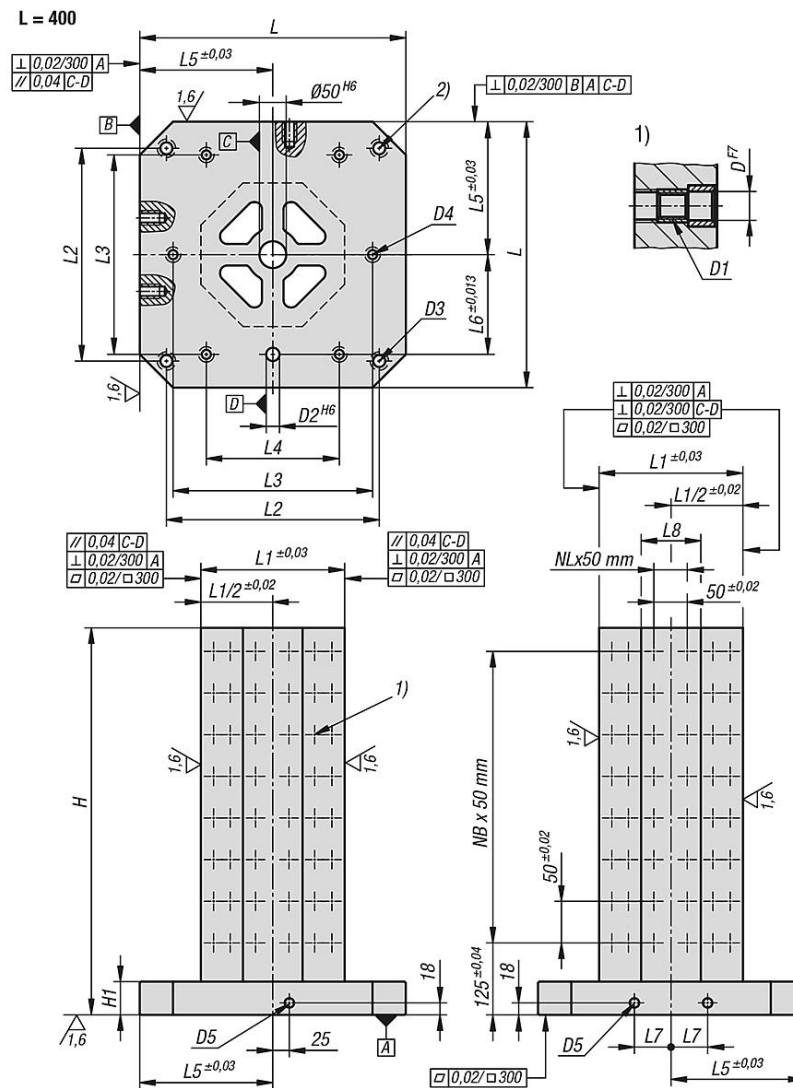
Drawing reference:

1) grid hole

2) hole for DIN 912 cap screw (D3/D4)

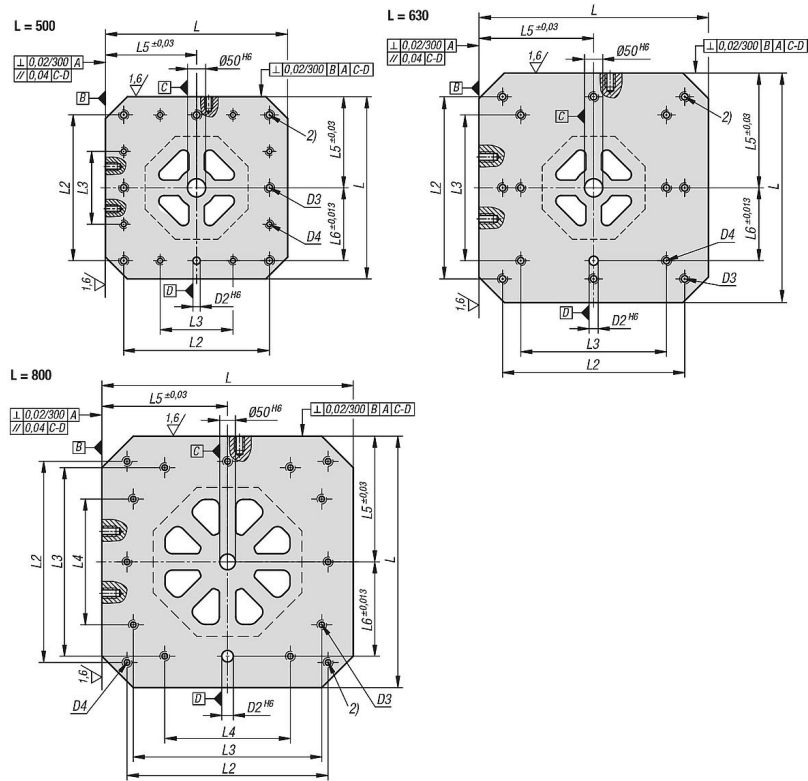
Clamping towers, grey cast iron, 8-sided, with grid holes

Drawings



Clamping towers, grey cast iron, 8-sided, with grid holes

Drawings



Overview of items

Clamping towers, grey cast iron, 8-sided, with grid holes

Order No.	L	H	L1	D	D1	D2	D3	D4	D5	H1	L2	L3	L4	L5	L6	L7	L8	No. of grid holes	NL=No. lengthwise	NB=No. across
K1535.21240050	400	500	250	12	M12	20	M16	M12	M 16	50	320	300	200	200	150	55	103	128	1	7
K1535.21240065	400	650	250	12	M12	20	M16	M12	M 16	50	320	300	200	200	150	55	103	176	1	10
K1535.21250060	500	600	300	12	M12	20	M16	M12	M 16	50	400	200	-	250	200	75	124	160	1	9
K1535.21250075	500	750	300	12	M12	20	M16	M12	M 16	50	400	200	-	250	200	75	124	208	1	12
K1535.21263070	630	700	350	12	M12	25	M16	M16	M 16	50	500	400	-	315	200	100	145	192	1	11
K1535.21263085	630	850	350	12	M12	25	M16	M16	M 16	50	500	400	-	315	200	100	145	240	1	14
K1535.21280080	800	800	500	12	M12	25	M16	M16	M 16	50	640	600	400	400	300	135	207	448	3	13
K1535.21280100	800	1000	500	12	M12	25	M16	M16	M 16	50	640	600	400	400	300	135	207	576	3	17
K1535.21640050	400	500	250	16	M16	20	M16	M12	M 16	50	320	300	200	200	150	55	103	128	1	7
K1535.21640065	400	650	250	16	M16	20	M16	M12	M 16	50	320	300	200	200	150	55	103	176	1	10
K1535.21650060	500	600	300	16	M16	20	M16	M12	M 16	50	400	200	-	250	200	75	124	160	1	9
K1535.21650075	500	750	300	16	M16	20	M16	M12	M 16	50	400	200	-	250	200	75	124	208	1	12
K1535.21663070	630	700	350	16	M16	25	M16	M16	M 16	50	500	400	-	315	200	100	145	192	1	11
K1535.21663085	630	850	350	16	M16	25	M16	M16	M 16	50	500	400	-	315	200	100	145	240	1	14
K1535.21680080	800	800	500	16	M16	25	M16	M16	M 16	50	640	600	400	400	300	135	207	448	3	13
K1535.21680100	800	1000	500	16	M16	25	M16	M16	M 16	50	640	600	400	400	300	135	207	576	3	17