

Tombstone, grey cast iron, double-sided, for interchangeable subplates

Item description/product images



Description

Material:

GJL 300.

Version:

Support and mounting surfaces precision machined

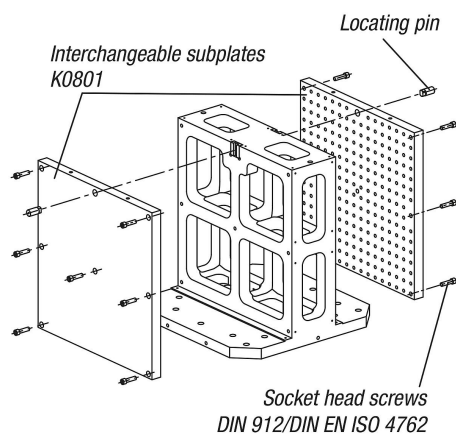
Note:

Interchangeable subplates can be positioned and mounted on both sides of the tombstone. This means that clamping fixtures can be replaced efficiently. The tombstones conform to machine tables for machine tools acc. to DIN 55201 and JIS6337-1980. Please order locating pins for positioning tombstones on machine tables acc. to DIN 55201 separately.

Ring bolts for hoisting are supplied, as well as 2 positioning pins for positioning the interchangeable subplates.

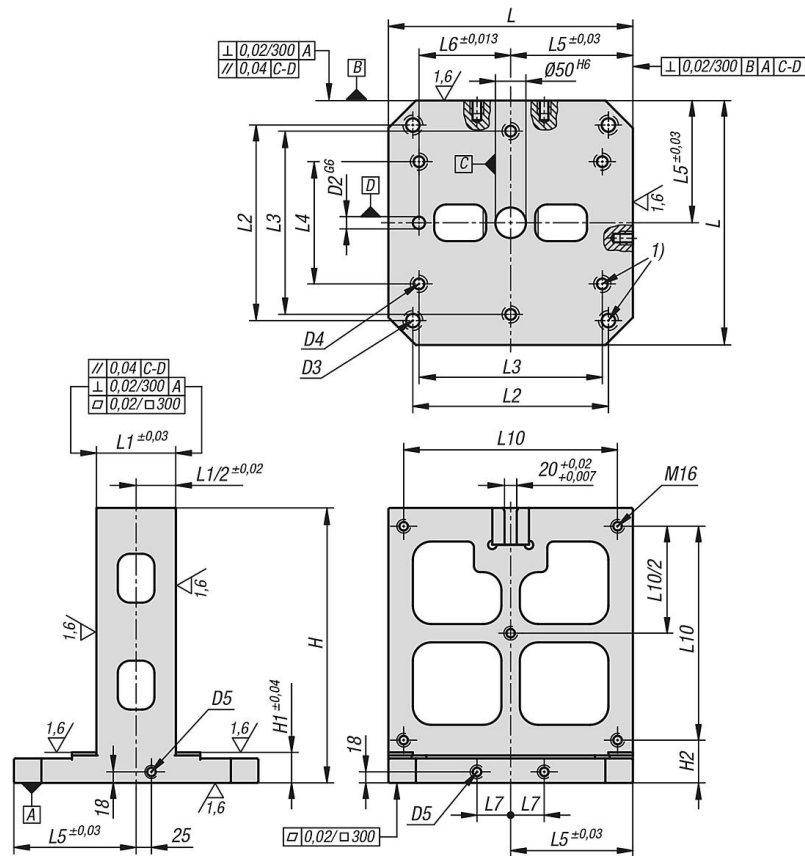
Drawing reference:

1) hole for DIN 912 cap screw



Tombstone, grey cast iron, double-sided, for interchangeable subplates

Drawings



Overview of items

Tombstone, grey cast iron, double-sided, for interchangeable subplates

Order No.	L	L1	H	D2	D3	D4	D5	H1	H2	L2	L3	L4	L5	L6	L7	L10
K0804.14045	400	130	450	20	M16	M12	M16	50	70	320	300	200	200	150	55	350
K0804.15055	500	150	550	20	M16	M12	M16	55	75	400	200	-	250	200	75	450
K0804.16369	630	220	690	25	M16	M16	M16	60	80	500	400	-	315	200	100	580
K0804.18086	800	250	860	25	M16	M16	M16	60	80	640	600	400	400	300	135	750