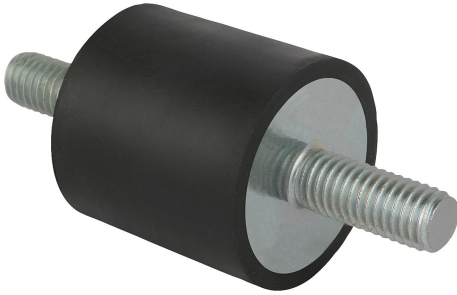


Rubber buffers steel or stainless steel, type A cylindrical with external thread both sides

Item description/product images



Description

Material:

Metal parts steel grade 5.6 or stainless steel.
Elastomer natural rubber, medium hardness, Shore 55A.

Version:

Steel electro zinc-plated.
Stainless steel bright.

Note:

The rubber buffers are widely-used construction elements for elastic mounting. They are used, among other things, as mountings for aggregates, motors, compressors, pumps and testing machinery.

Due to the material composition, rubber buffers are contact-colouring, which can lead to abrasion marks and discolouration on e.g. floors or contact surfaces.

Rubber buffers made of light grey EPDM that are not contact-colouring are available on request.

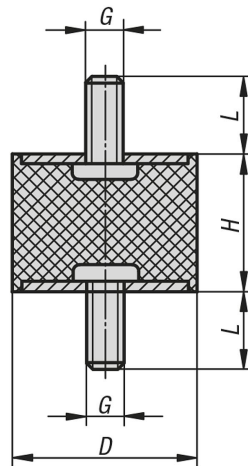
Temperature range:

-30 °C to +80 °C

On request:

Other Shore grades.

Drawings



Overview of items

Rubber buffers, steel or stainless steel, type A

Order No.	Main material	D	G	L	H	Spring stiffness N/mm	Load N
K0566.00800855	steel	8	M3	6	8	24	31
K0566.01001055	steel	10	M4	10	10	35	32
K0566.01001555	steel	10	M4	10	15	50	50
K0566.01500855	steel	15	M4	10	8	130	104

Rubber buffers steel or stainless steel, type A cylindrical with external thread both sides

Overview of items

Order No.	Main material	D	G	L	H	Spring stiffness N/mm	Load N
K0566.01501055	steel	15	M4	10	10	122	122
K0566.01501555	steel	15	M4	10	15	59	88
K0566.02000855	steel	20	M6	18	8	725	580
K0566.02001055	steel	20	M6	18	10	300	300
K0566.02001555	steel	20	M6	18	15	200	300
K0566.02002055	steel	20	M6	18	20	133	332
K0566.02002555	steel	20	M6	18	25	90	270
K0566.02501055	steel	25	M6	18	10	800	800
K0566.02501555	steel	25	M6	18	15	294	441
K0566.02502055	steel	25	M6	18	20	200	500
K0566.02502555	steel	25	M6	18	25	94	282
K0566.02503055	steel	25	M6	18	30	70	280
K0566.03001555	steel	30	M8	23	15	587	880
K0566.03002055	steel	30	M8	23	20	318	795
K0566.03002555	steel	30	M8	23	25	183	549
K0566.03003055	steel	30	M8	23	30	150	600
K0566.03004055	steel	30	M8	23	40	77	385
K0566.04001555	steel	40	M8	23	15	1250	1875
K0566.04002055	steel	40	M8	23	20	565	1412
K0566.04003055	steel	40	M8	23	30	300	1200
K0566.04004055	steel	40	M8	23	40	189	945
K0566.05002055	steel	50	M10	28	20	1300	3250
K0566.05002555	steel	50	M10	28	25	667	2000
K0566.05003055	steel	50	M10	28	30	500	2000
K0566.05004055	steel	50	M10	28	40	300	1500
K0566.05005055	steel	50	M10	28	50	193	1153
K0566.06004055	steel	60	M10	28	40	377	1885
K0566.07004555	steel	70	M10	28	45	410	2255
K0566.07502555	steel	75	M12	37	25	1655	4965
K0566.07504055	steel	75	M12	37	40	717	3585
K0566.07505055	steel	75	M12	37	50	470	2820
K0566.07505555	steel	75	M12	37	55	405	2835
K0566.015015551	stainless steel	15	M4	12	15	59	88
K0566.020015551	stainless steel	20	M6	18	15	200	300
K0566.025020551	stainless steel	25	M6	18	20	200	500
K0566.030020551	stainless steel	30	M8	23	20	318	795
K0566.030025551	stainless steel	30	M8	23	25	183	549
K0566.040030551	stainless steel	40	M8	23	30	300	1200