

## Tubular handles, aluminium with plastic grip legs, oblique

### Item description/product images



### Description

#### Material:

Grip tube aluminium EN AW-6060;  
Legs polyamide, glass-bead reinforced;  
Bushing brass

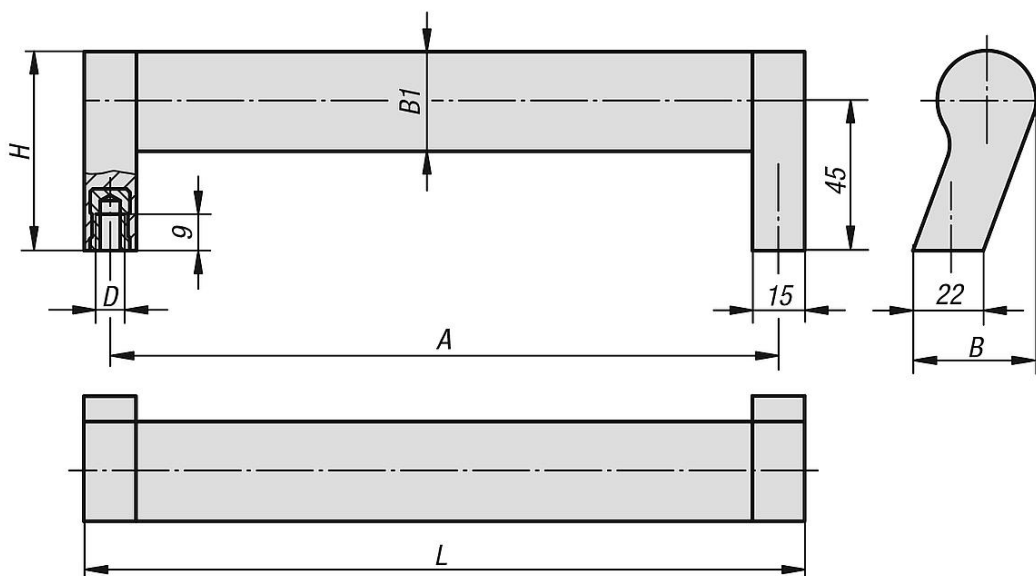
#### Version:

Tube matt-polished anodised.  
Legs black

#### Note:

Oblique tubular pull handles in modern industrial design. Webs on the leg spigot provide a precision fit for the tube.

### Drawings



### Overview of items

#### Tubular handles, oblique

Order No.	A	B	B1	D	H	L	Load capacity N
K0212.2150061	150	37	30X1,5	M6	60	165	800
K0212.2200061	200	37	30X1,5	M6	60	215	800
K0212.2250061	250	37	30X1,5	M6	60	265	800
K0212.2300061	300	37	30X1,5	M6	60	315	800
K0212.2350061	350	37	30X1,5	M6	60	365	800
K0212.2400061	400	37	30X1,5	M6	60	415	800

