

## Handles, Form A

### Item description/product images



### Description

#### Material:

Knobs thermoset PF 31.

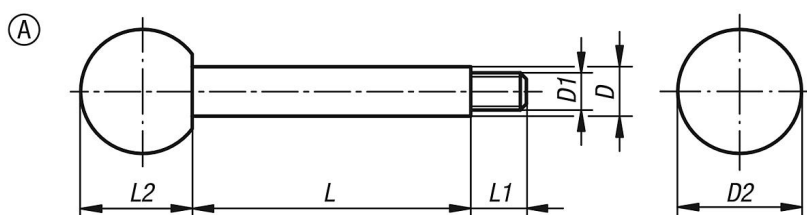
Rod steel 1.0718 or stainless steel 1.4305.

#### Version:

Thermoset black, high-gloss polished.

Steel black oxidised or bright stainless steel.

### Drawings



### Overview of items

Order No.	Main material	Form	D	D1	D2	L	L1	L2
K0179.208X35	steel	A	8	M6	20	35	9	18
K0179.208X50	steel	A	8	M6	20	50	9	18
K0179.208X65	steel	A	8	M6	20	65	9	18
K0179.210X50	steel	A	10	M8	25	50	13	23
K0179.210X65	steel	A	10	M8	25	65	13	23
K0179.210X80	steel	A	10	M8	25	80	13	23
K0179.210X100	steel	A	10	M8	25	100	13	23
K0179.212X65	steel	A	12	M10	32	65	15	29
K0179.212X80	steel	A	12	M10	32	80	15	29
K0179.212X100	steel	A	12	M10	32	100	15	29
K0179.212X125	steel	A	12	M10	32	125	15	29
K0179.214X80	steel	A	14	M12	36	80	16	33
K0179.214X100	steel	A	14	M12	36	100	16	33
K0179.214X125	steel	A	14	M12	36	125	16	33
K0179.214X160	steel	A	14	M12	36	160	16	33
K0179.1208X35	stainless steel	A	8	M6	20	35	9	18
K0179.1208X50	stainless steel	A	8	M6	20	50	9	18
K0179.1208X65	stainless steel	A	8	M6	20	65	9	18
K0179.1210X50	stainless steel	A	10	M8	25	50	13	23
K0179.1210X65	stainless steel	A	10	M8	25	65	13	23
K0179.1210X80	stainless steel	A	10	M8	25	80	13	23
K0179.1210X100	stainless steel	A	10	M8	25	100	13	23
K0179.1212X65	stainless steel	A	12	M10	32	65	15	29
K0179.1212X80	stainless steel	A	12	M10	32	80	15	29
K0179.1212X100	stainless steel	A	12	M10	32	100	15	29
K0179.1212X125	stainless steel	A	12	M10	32	125	15	29
K0179.1214X80	stainless steel	A	14	M12	36	80	16	33
K0179.1214X100	stainless steel	A	14	M12	36	100	16	33
K0179.1214X125	stainless steel	A	14	M12	36	125	16	33
K0179.1214X160	stainless steel	A	14	M12	36	160	16	33

