

## Compression latches, zinc

### Item description/product images



### Description

**Material:**

Housing and actuator die-cast zinc.  
Flat seal rubber.

**Version:**

Housing and actuator chrome-plated.

**Note:**

Compression latches are primarily used for doors and housings that require a high pressure on the seal. Right or left deployment. The locking direction is always clockwise.

Vibration-proof, water and dust tight according to IP65.

Please order the desired tongue type separately. Every tongue can be combined with every housing.

\*Dimension A results from the combination of the quarter turn lock and the tongue and is specified with the matching tongues.

**Function:**

Turning the actuator 90° brings the tongue into the closed position. Turning the actuator another 90° draws the tongue into the frame increasing the pressure. The compression gap is 6 mm. The fastening nut is an earthing nut with teeth one side.

**Accessory:**

Key K0535

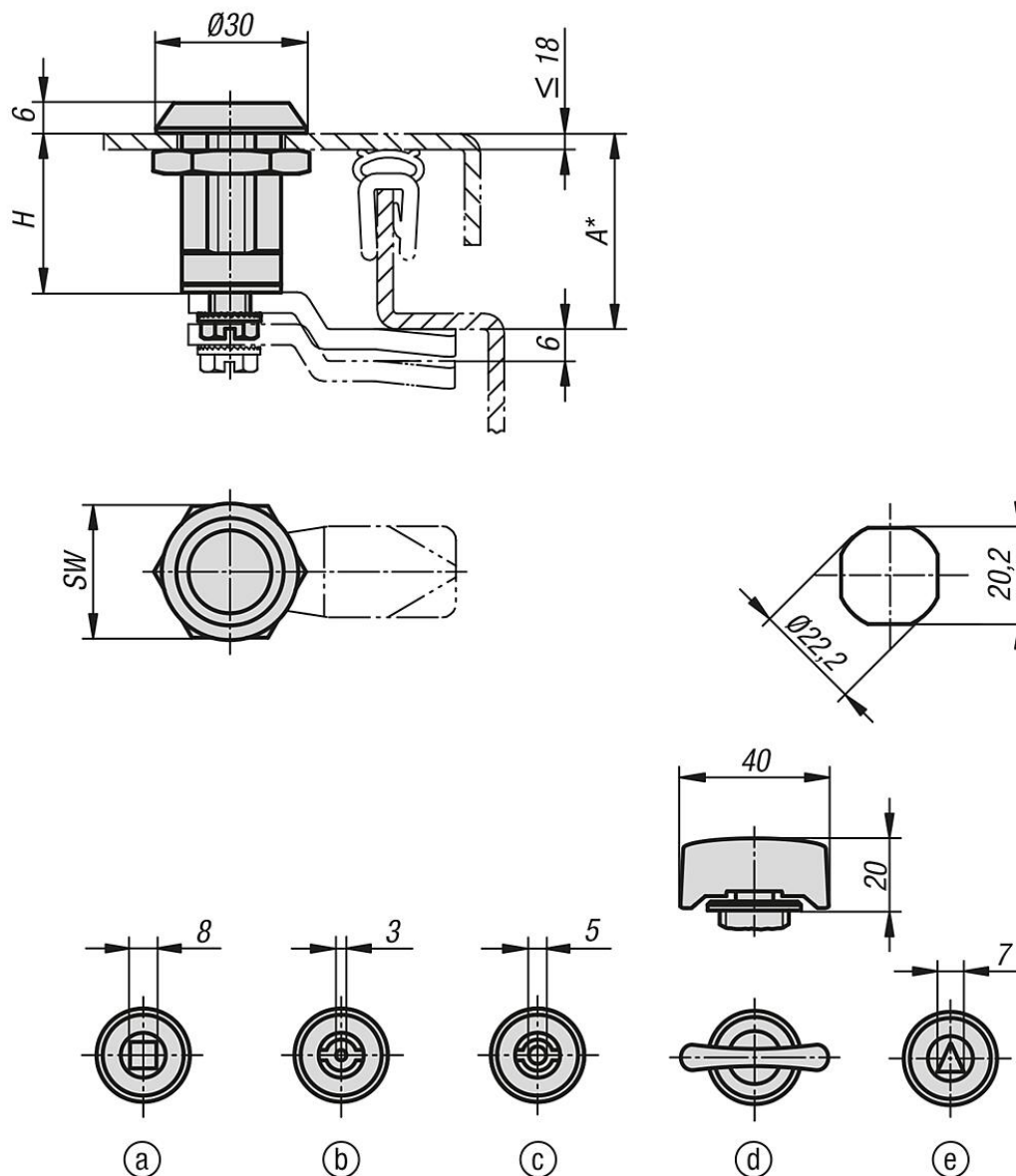
**Drawing reference:**

Actuation:

- a) square 8 mm
- b) double lug 3 mm
- c) double lug 5 mm
- d) T-grip
- e) triangle 7 mm

## Compression latches, zinc

### Drawings



### Overview of items

#### Compression latches, zinc

Order No.	Actuation	H	S max.	SW
K0529.18321	200 m / on the roll	32	18	27
K0529.30321	20 x ball joint ModuLine ML-20-6 Art. 241211, 4 x ball joint ML-40 Art. 241227 40 x extension ModuLine ML-20-50 Art. 245800, 10 x swivel joint ModuLine TurnStop ML-100 Art. 241200, 10 x function head ModuLine ML-20 Art. 245700	32	18	27
K0529.43321	200 ml aerosol	32	18	27
K0529.45321	2000	32	18	27
K0529.87321	Size 0	32	18	27

