

## Quarter-turn lock zinc, lockable, long version

### Item description/product images



### Description

**Material:**

Housing and actuator die-cast zinc.  
Nut steel.

**Version:**

Housing and actuator chrome-plated.  
Nut electro zinc-plated.

**Note:**

Lockable quarter-turn lock for right or left mounting with 90° closing. The quarter-turn lock can be installed pre-assembled (apart from those with a down offset tongue).

With stainless steel cylinder cap and dust cover.

These lockable quarter-turn locks are each delivered with 2 keys. The key can be removed in both positions (open and closed). The locks have a single key system, i.e. they can all be opened using the same key (cylinder lock 1333).

Please order required tongue version separately. Every tongue can be combined with every housing.

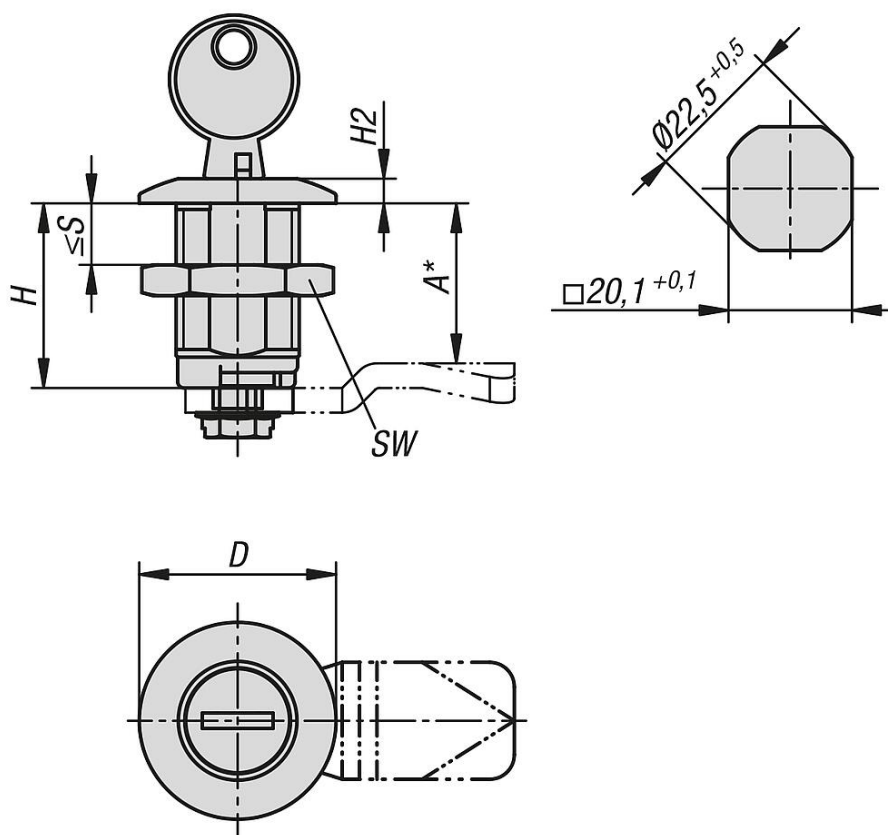
\*Dimension A results from the combination of the quarter turn lock and the tongue and is specified with the matching tongues.

**Accessory:**

Tonge steel, with stop K2218.  
Key for quarter-turn lock K1511.

# Quarter-turn lock zinc, lockable, long version

## Drawings



## Overview of items

### Quarter-turn lock zinc, lockable, long version

Order No.	D	H	H2	S max.	SW	Actuation
K2217.30321	32	30	4	20	27	key single-key system
K2217.50321	32	50	4	40	27	key single-key system