

Swivel castors with "stop-top"

Item description/product images



Description

Material:

Housing steel plate.

Wheel body die-cast aluminium with Extrathane® tread.

Version:

Housing press formed.

Double ball bearing with ball shield in the castor head.

Precision ball bearings in the wheels.

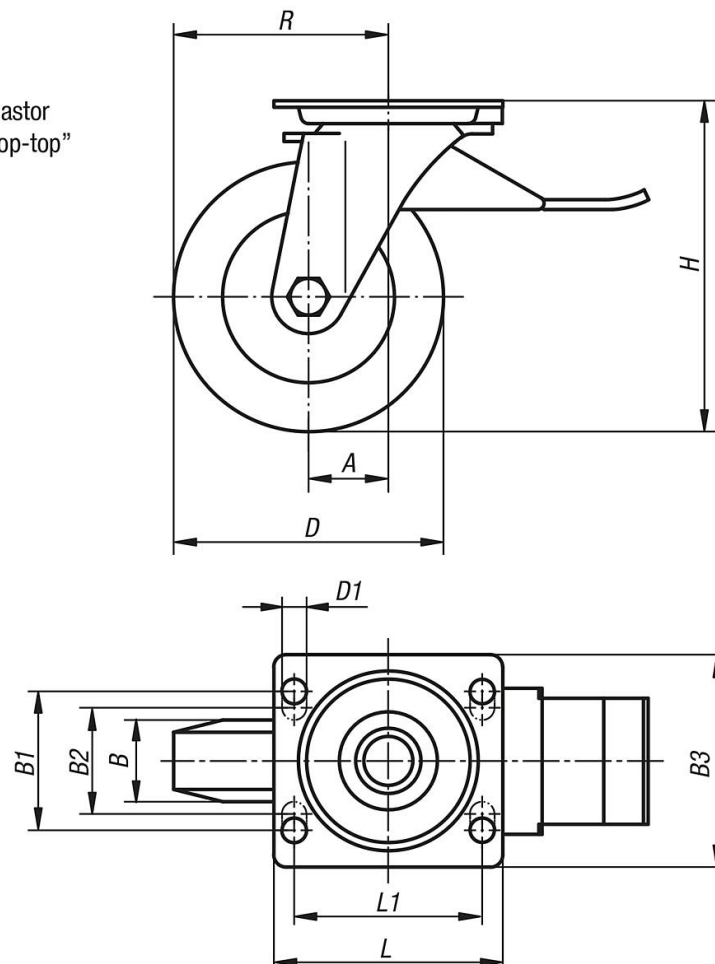
Note:

The wheels are corrosion resistant and they have a low rolling resistance. Wheel axle bolted.

From diameter 125 mm the wheels have spokes.

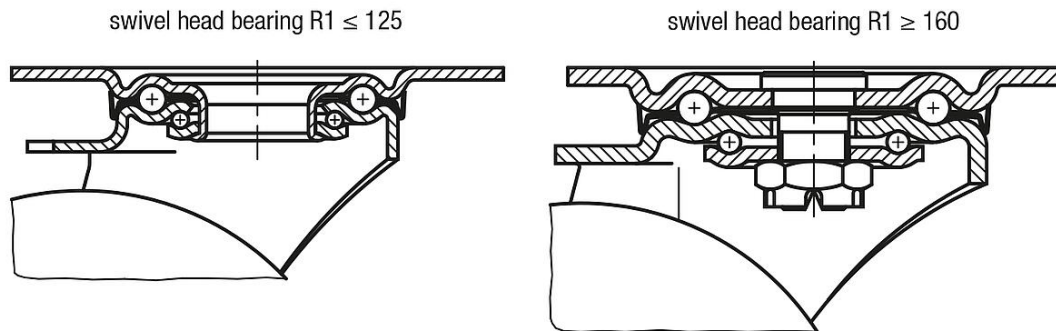
Drawings

swivel castor
with "stop-top"



Swivel castors with "stop-top"

Drawings



Overview of items

Order No.	Item	Version 1	Wheel bearing	A	B	B1	B2	B3	D	D1	H	L	L1	R	Permissible load kg
K1767.100402	Swivel castor	with stop-top locking system	ball bearing	45	40	60	-	85	100	9	130	100	80	95	250
K1767.125402	Swivel castor	with stop-top locking system	ball bearing	48	40	60	-	85	125	9	155	100	80	110,5	250
K1767.160502	Swivel castor	with stop-top locking system	ball bearing	63	50	80	75	110	160	11	202	140	105	143	550
K1767.200502	Swivel castor	with stop-top locking system	ball bearing	70	50	80	75	110	200	11	245	140	105	170	800