

Guides, plastic for flat bars

Item description/product images



Description

Material:

Guides plastic.

Version:

Plastic black.

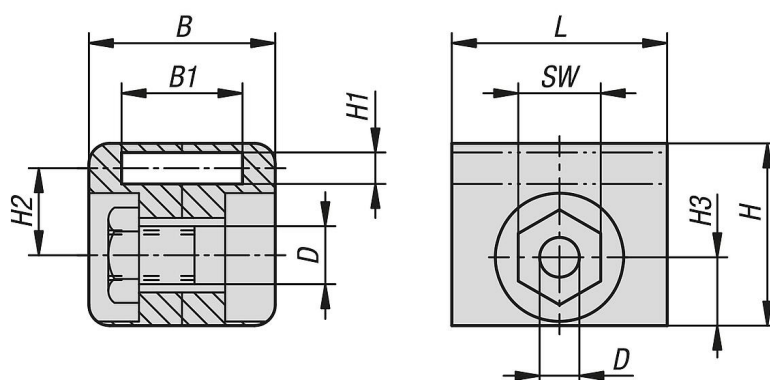
Note:

The plastic guides for flat bars are required to ensure that the flat bars (K2278) are guided smoothly in a switch cabinet.

Accessory:

K2278 Steel flat bars for swivel grip.

Drawings



Overview of items

Guides, plastic for flat bars

Order No.	B	B1	D	H	H1	H2	H3	L	SW
K2280.415	22,5	14,6	M6	22	3,8	10,5	8	26	10