

Tubular handles, oval aluminium

Item description/product images



Description

Product description:

These tubular handles impresses with a combination of solid appearance, high stability and extreme lightness. The patented fastening system enables the handles to be installed from the rear with no screws visible from the front. With its easy-to-clean and abrasion-resistant surface, the handle also blends in perfectly with its surroundings.

Material:

Tube oval aluminium EN AW-6060.
Tapped bush steel.

Version:

Anodised natural tone or powder-coated black, ruby red RAL 3003 or traffic red RAL 3020.

Note:

Fastening materials are not supplied. Cap screws with thread lock are recommended for a secure and long-lasting attachment.

Assembly:

The tubular handle can be mounted from the rear. DIN socket head screws or hexagon head bolts with thread size M8 are provided for this purpose.

Advantages:

Solid appearance combined with low weight

Timeless elegant design.

Ergonomic handle shape.

Patented fastening system for rear mounting.

Accessory:

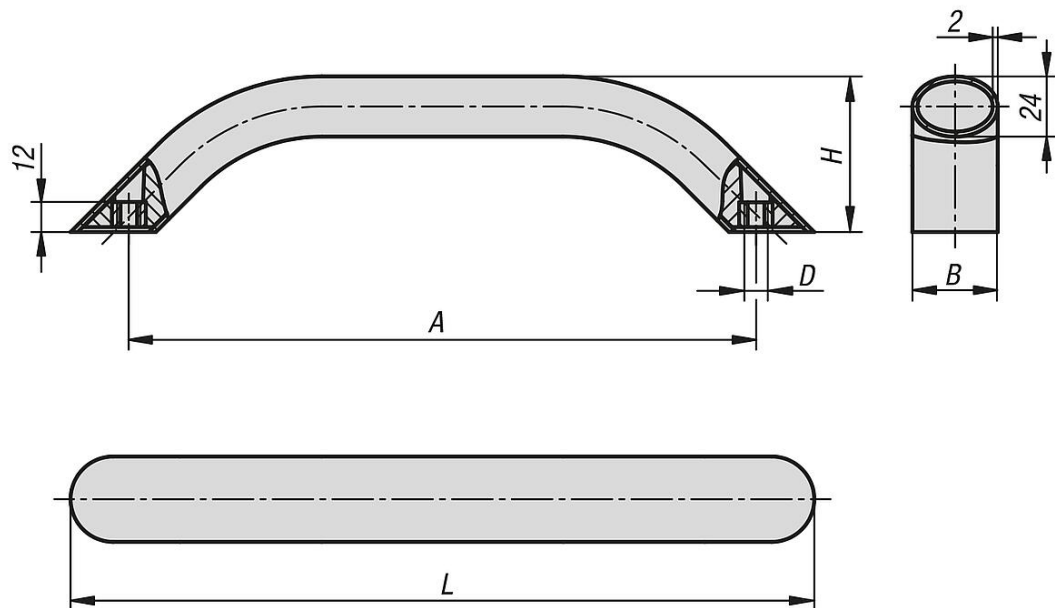
K0869 Socket head screws DIN 912 / DIN EN ISO 4762 with thread lock

K0869 Socket head screws DIN 912 / DIN EN ISO 4762

K0871 Hex head screws DIN 933 / DIN-EN-ISO 4017

Tubular handles, oval aluminium

Drawings



Overview of items

Tubular handles oval, aluminium

Order No.	Main colour	Surface finish body	A	B	D	H	L	Load capacity N
K0796.250083	Adapter plate	for handwheels	250	34	M8	62	296,4	1000
K0796.300083	Adapter plate	for handwheels	300	34	M8	62	346,4	1000
K0796.400083	Adapter plate	for handwheels	400	34	M8	62	446,4	1000
K0796.500083	Adapter plate	for handwheels	500	34	M8	62	546,4	1000
K0796.250081	9 hours	keyboard tray	250	34	M8	62	296,4	1000
K0796.300081	9 hours	keyboard tray	300	34	M8	62	346,4	1000
K0796.400081	9 hours	keyboard tray	400	34	M8	62	446,4	1000
K0796.500081	9 hours	keyboard tray	500	34	M8	62	546,4	1000
K0796.2500827	Adapter plate	keyboard tray	250	34	M8	62	296,4	1000
K0796.3000827	Adapter plate	keyboard tray	300	34	M8	62	346,4	1000
K0796.4000827	Adapter plate	keyboard tray	400	34	M8	62	446,4	1000
K0796.5000827	Adapter plate	keyboard tray	500	34	M8	62	546,4	1000
K0796.2500884	750X50000 (+/- 10 mm)	keyboard tray	250	34	M8	62	296,4	1000
K0796.3000884	750X50000 (+/- 10 mm)	keyboard tray	300	34	M8	62	346,4	1000
K0796.4000884	750X50000 (+/- 10 mm)	keyboard tray	400	34	M8	62	446,4	1000
K0796.5000884	750X50000 (+/- 10 mm)	keyboard tray	500	34	M8	62	546,4	1000

Information about this article