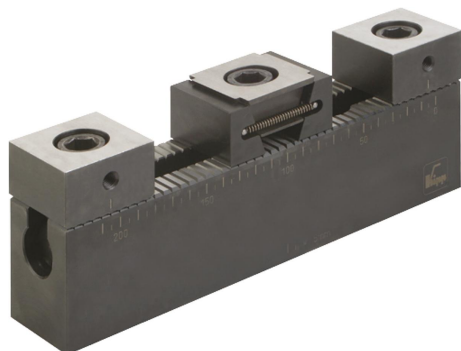


Multi-clamping system soft stops

Item description/product images



Description

Material:

Base rail, stops and wedge clamp carbon steel.

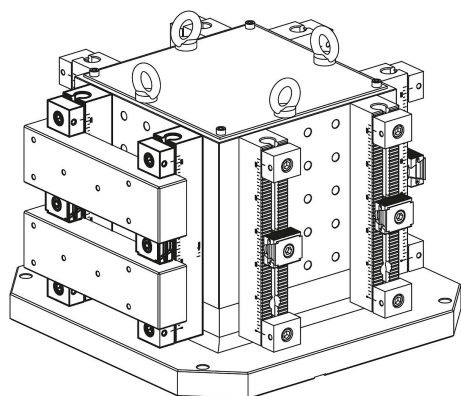
Version:

Serrations case hardened and ground.

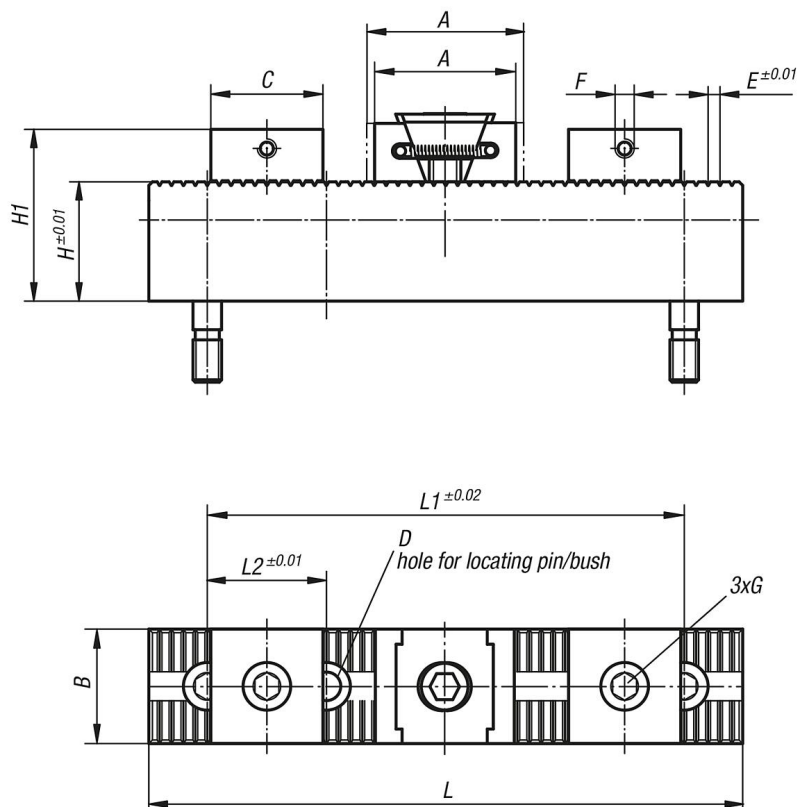
Clamping jaws hardened and black oxidised.

Note:

Depending on the size the clamping jaws have 3 mm (K0903.08) or 5 mm (K0903.12, K0903.16) machining allowance per jaw.



Drawings



Overview of items

Multi-clamping system soft stops

Overview of items
