

Handwheels disc with revolving grip

Item description/product images



Description

Material:

Thermoset PF 31, black.

Hubs and steel parts of grip nickel-plated steel or bright 1.4305 stainless steel.

Version:

High-gloss polished.

Note:

The handwheel is supplied with the grip loose.

On request:

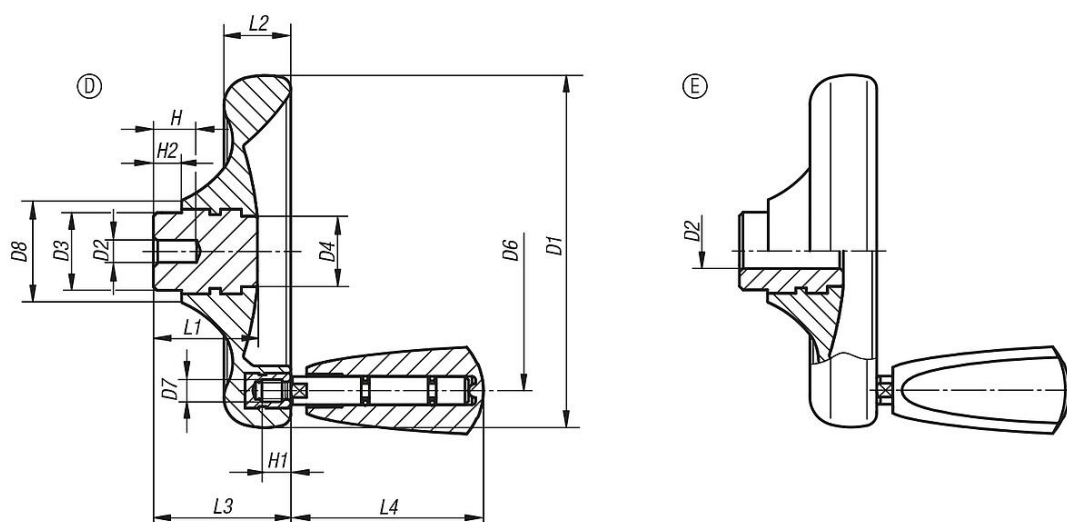
Other reamed hole sizes.

Drawing reference:

Form D: pilot hole

Form E: reamed hole

Drawings



Overview of items

Handwheels disc, with revolving grip

Order No.	Form	Form definition	Steel parts material	D1	D2	D3	D4	D6	D7	D8	H	H1	H2	L1	L2	L3	L4
K0164.1100X10	E	with reamed hole	steel	100	10H8	22	20	79	M6	29	-	9	8	29,5	19	39	54,7