

Angle plates, grey cast iron, narrow with grid holes

Item description/product images



Description

Material:
GJL 300.

Version:
Support and mounting surfaces precision machined

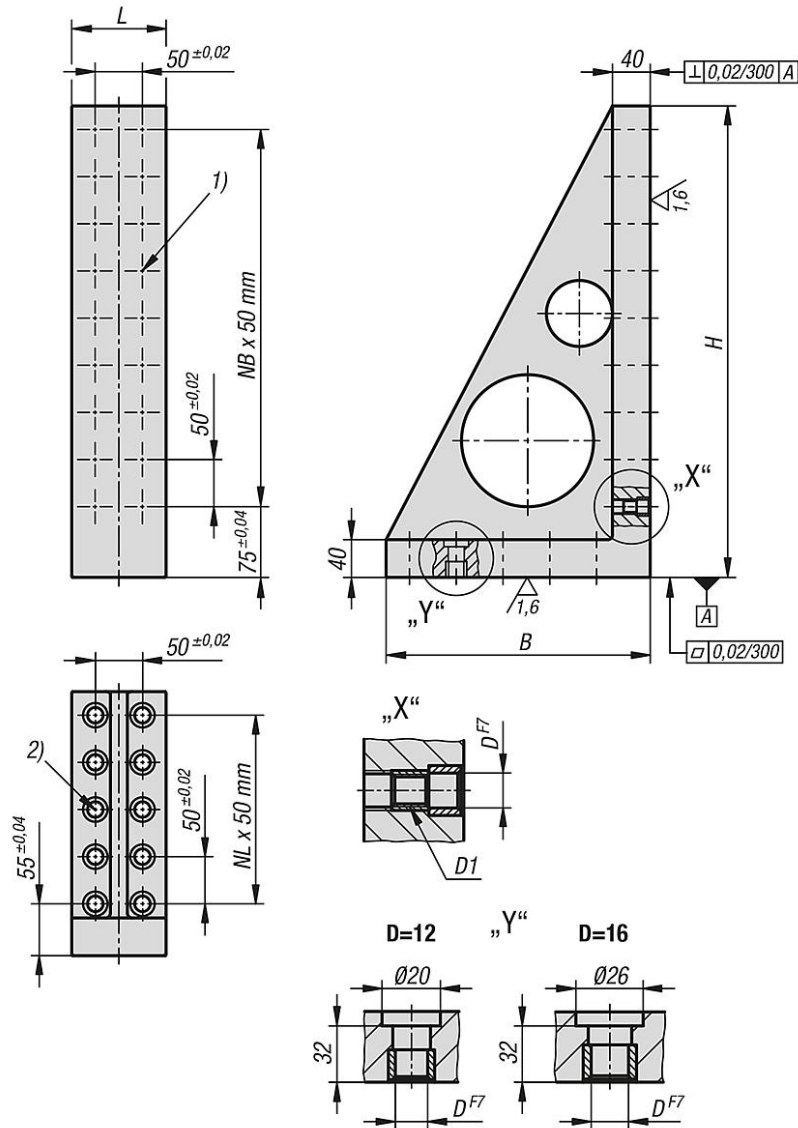
Note:
Grid spacing 50 ± 0.02 mm.
Angle plates are used for the vertical positioning and mounting of workpieces and fixtures. The shoulder screws K0815 are used to position and fasten the angle plates on the grid plates K0800 or subplates K0806.
Size M12 angle plates are fastened using shoulder screws K0815.112065.
Size M16 angle plates are fastened using shoulder screws K0815.116065.
Please order protection plugs to plug unused grid holes separately.

Drawing reference:

- 1) grid hole
- 2) hole for shoulder screw

Angle plates, grey cast iron, narrow with grid holes

Drawings



Overview of items

Angle plates, grey cast iron, narrow with grid holes

Order No.	L	B	H	D	D1	N1=No. of grid holes	No. of fastening holes	NL=No. lengthwise	NB=No. across
K0807.212181030	100	180	300	12	M12	10	6	2	4
K0807.212231040	100	230	400	12	M12	14	8	3	6
K0807.212281050	100	280	500	12	M12	18	10	4	8
K0807.216181030	100	180	300	16	M16	10	6	2	4
K0807.216231040	100	230	400	16	M16	14	8	3	6
K0807.216281050	100	280	500	16	M16	18	10	4	8

