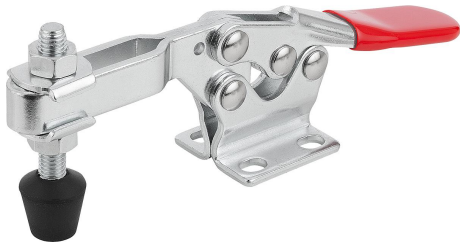


Toggle clamps horizontal with flat foot and adjustable clamping spindle

Item description/product images



Description

Material:
Steel or stainless steel.

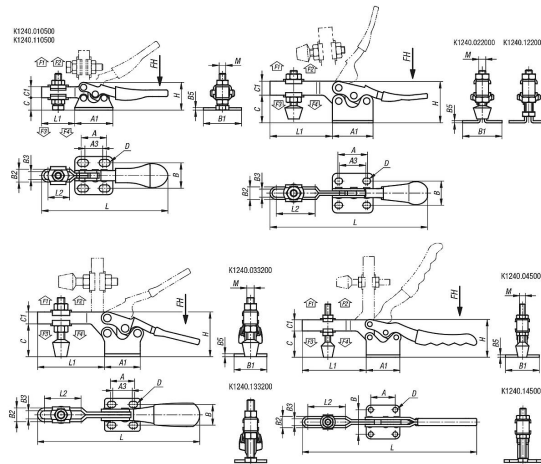
Version:
Electro zinc-plated steel.
Bright stainless steel.
Plastic handle, oil-resistant.

Note:
A neoprene thrust pad is supplied with versions K1240.022000, K1240.033200 and K1240.045000.

Accessory:

- K0688
- K0689
- K0690
- K0101
- K1442
- K0102
- K0103
- K1443
- K0104
- K0106
- K1441

Drawings



Overview of items

Toggle clamps horizontal with flat foot and adjustable clamping spindle

Order No.	Main material	Opening angle of holding arm	Opening angle of handle	Hand force FH N	Retaining force F1 N	Retaining force F2 N	Clamping force F3 N	Clamping force F4 N
K1240.010500	steel	90°	75°	50	250	500	150	350
K1240.022000	steel	85°	73°	100	1000	2000	600	1200
K1240.033200	steel	90°	65°	150	2000	3200	800	1600

Toggle clamps horizontal with flat foot and adjustable clamping spindle

Overview of items

Order No.	Main material	Opening angle of holding arm	Opening angle of handle	Hand force FH N	Retaining force F1 N	Retaining force F2 N	Clamping force F3 N	Clamping force F4 N
K1240.045000	steel	90°	68°	250	2200	5000	1100	3000
K1240.110500	stainless steel	90°	75°	50	250	500	150	350
K1240.122000	stainless steel	85°	73°	100	1000	2000	600	1200
K1240.133200	stainless steel	90°	65°	150	2000	3200	800	1600
K1240.145000	stainless steel	90°	68°	250	2200	5000	1100	3000

Order No.	Main material	A	A1	A3	B	B1	B2	B3	B5	C	C1	D	H	L	L1	L2	M
K1240.010500	steel	15,9	23,8	11,1	15,9	23,8	8	5	1,5	7,7	6,8	4,4	17,3	79	20,7	13,5	M4x20
K1240.022000	steel	27	37	25,4	22	36	11,4	7,4	2	25,1	12,7	5,5	37,8	143,5	56,9	35,7	M6x44
K1240.033200	steel	25,4	38	20,8	22,2	35	14,7	8,7	3	34,9	12,7	6,7	47,6	173	71,6	39,1	M8x63
K1240.045000	steel	41,3	57,1	-	41,3	57,2	19	11	4	44,4	19	8,3	63,4	295,6	108,3	63,6	M10x85
K1240.110500	stainless steel	15,9	23,8	11,1	15,9	23,8	8	5	1,5	7,7	6,9	4,4	17,3	79	20,7	13,5	M4x20
K1240.122000	stainless steel	27	37	25,4	22	36	11,4	7,4	2	25,1	12,7	5,5	37,8	143,5	56,9	35,7	M6x40
K1240.133200	stainless steel	25,4	38	20,8	22,2	35	14,7	8,7	3	34,9	12,7	6,7	47,6	173	71,6	39,1	M8x60
K1240.145000	stainless steel	41,3	57,1	-	41,3	57,2	19	11	4	44,4	19	8,3	63,4	295,6	108,3	63,6	M10x80