

Magnets shallow pot with internal thread hard ferrite with stainless-steel housing

Item description/product images



Description

Material:

Housing stainless steel 1.4016.

Screw stainless steel 1.4305.

Magnetic core hard ferrite.

Version:

Bright.

Note:

Shallow pot magnets, shielded system.

Temperature range:

max. 220°C.

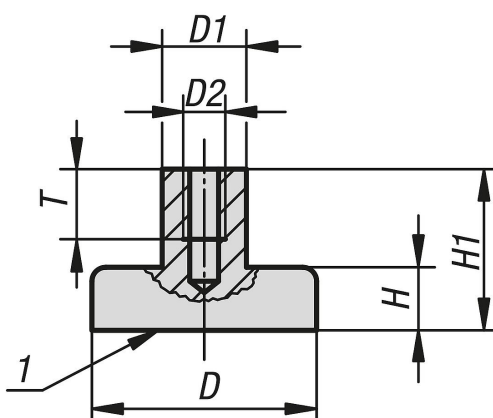
Assembly:

The magnets can be mounted by press-fit, screwing-in or gluing.

Drawing reference:

1) magnetic face

Drawings



Overview of items

Magnets shallow pot with internal thread, hard ferrite with stainless-steel housing

Order No.	D	D1	D2	H	H1	T	Magnetic force N
K1400.125	25 ±0,1	8	M5	7	16	10	32
K1400.132	32 ±0,1	8	M5	7	16	10	64
K1400.140	40 +0,2/-0,1	8	M5	8	16,5	10	100
K1400.150	50 +0,2/-0,1	8	M5	10	18,5	10	175
K1400.163	63 +0,3/-0,1	8	M5	14	22	10	280

Magnets shallow pot with internal thread hard ferrite with stainless-steel housing

Overview of items
