

Self-aligning pads self-righting

Item description/product images



Description

Material:

Form C and F:
Ball steel, ball seat high-carbon steel.
Form G and J:
Ball high-carbon steel, ball seat steel.

Version:

Form C and F:
Ball hardened and black oxidised, ball seat phosphated.
Form G and J:
Ball phosphated, ball seat hardened and black oxidised.

Note:

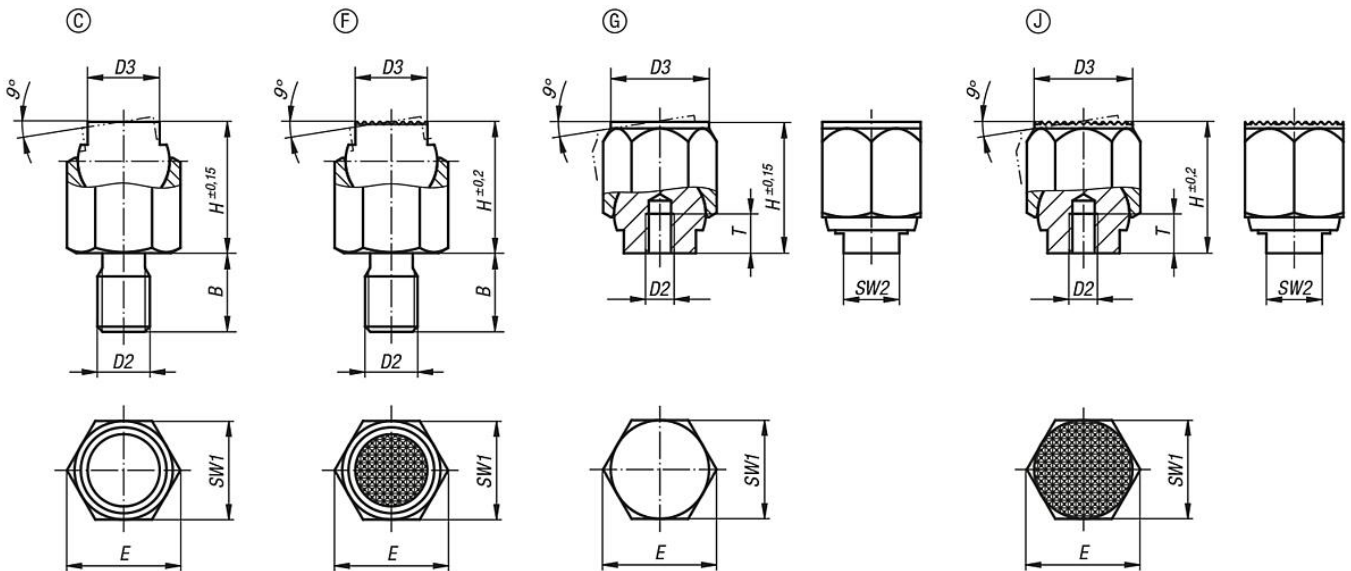
The self-aligning pads serve as stops, rests and thrust pads in fixture construction. The seating face returns to the start position when the load is removed.

Ball secured against rotation.

Drawing reference:

Form C: external thread, flattened ball, smooth
Form F: external thread, flattened ball, diamond grip
Form G: press fit, flattened ball, smooth
Form J: press fit, flattened ball, diamond grip

Drawings



Overview of items

Self-aligning pads, self-righting

Order No.	Form	B	D2	D3	H	T	E	SW1	SW2	Ball-Ø	Load rating max. kN (static load only)
K1164.106	C	9	M6	7	13	-	11,5	10	-	9	8

Self-aligning pads self-righting

Overview of items

Order No.	Form	B	D2	D3	H	T	E	SW1	SW2	Ball-Ø	Load rating max. kN (static load only)
K1164.108	C	12	M8	9,5	18	-	15	13	-	12	16
K1164.110	C	15	M10	14	25	-	21,9	19	-	17	32
K1164.112	C	18	M12	20	36	-	31,2	27	-	25	64
K1164.116	C	24	M16	22	40	-	34,6	30	-	28	90
K1164.306	F	9	M6	7	13	-	11,5	10	-	9	8
K1164.308	F	12	M8	9,5	18	-	15	13	-	12	16
K1164.310	F	15	M10	14	25	-	21,9	19	-	17	32
K1164.312	F	18	M12	20	36	-	31,2	27	-	25	64
K1164.316	F	24	M16	22	40	-	34,6	30	-	28	90
K1164.403	G	-	M3	9	13	5	11,5	10	6	9	8
K1164.404	G	-	M4	12	18	6	15	13	8	12	16
K1164.405	G	-	M5	18	25	8	21,9	19	10	17	32
K1164.406	G	-	M6	26	36	10	31,2	27	16	25	64
K1164.408	G	-	M8	30	40	12	34,6	30	17	28	90
K1164.603	J	-	M3	9	13	5	11,5	10	6	9	8
K1164.604	J	-	M4	12	18	6	15	13	8	12	16
K1164.605	J	-	M5	18	25	8	21,9	19	10	17	32
K1164.606	J	-	M6	26	36	10	31,2	27	16	25	64
K1164.608	J	-	M8	30	40	12	34,6	30	17	28	90