

## Quarter-turn locks with cylinder, small version

### Item description/product images

---



### Description

**Material:**

Housing and actuator die-cast zinc.

Key nickel silver.

**Version:**

Housing and actuator chrome-plated.

**Note:**

Small quarter turn with cylinder, deployable right or left. The lock can be installed pre-assembled. The fastening nut is an earthing nut with teeth one side.

These quarter turns with cylinder are supplied with 2 keys. The key can be removed in both positions (open and closed). All cylinders are identical i.e. all locks can be opened with the same key.

Please order the desired tongue type separately.

\*Dimension A results from the combination of the quarter turn lock and the tongue and is specified with the matching tongues.

**On request:**

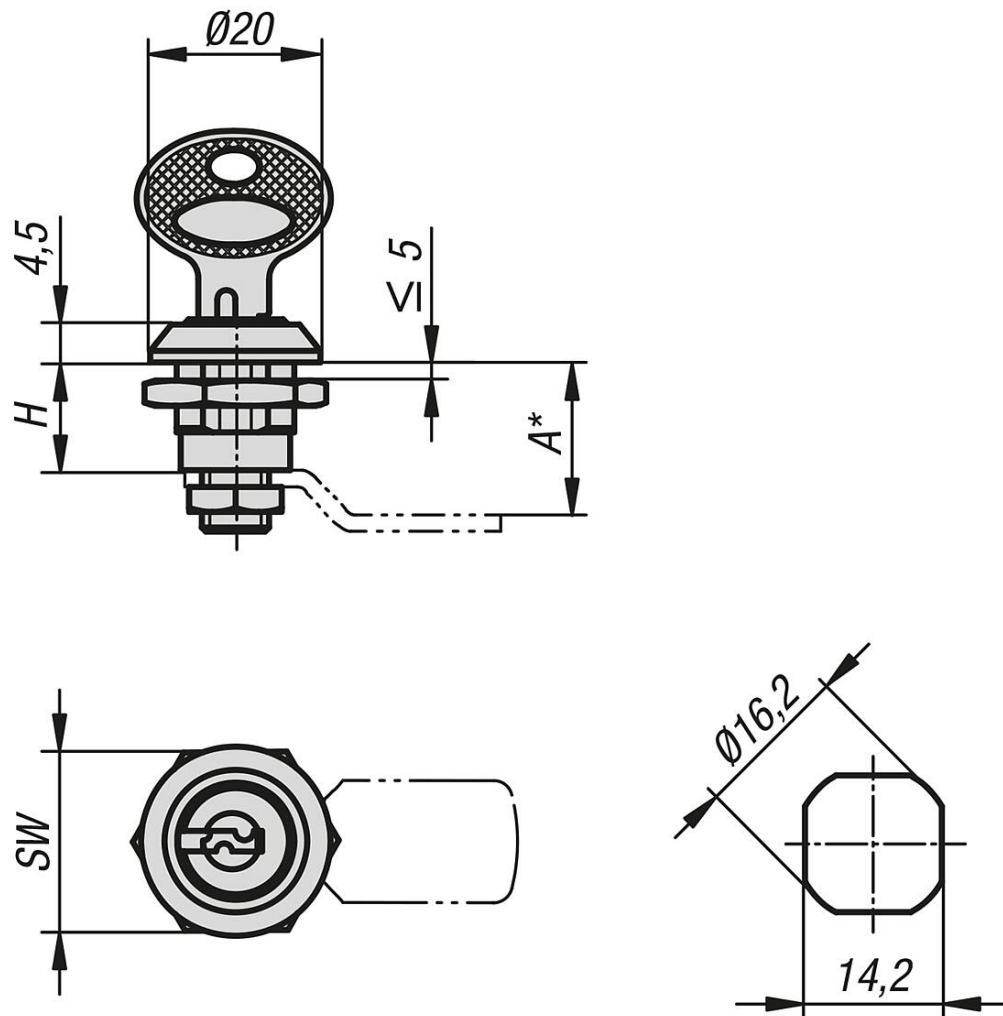
Non-identical cylinders.

**Accessory:**

Tongue for steel quarter-turn lock K0521.

## Quarter-turn locks with cylinder, small version

### Drawings



### Overview of items

#### Quarter-turn locks with cylinder, small version

Order No.	Actuation	H	SW
K0520.131	key single-key system	13	20