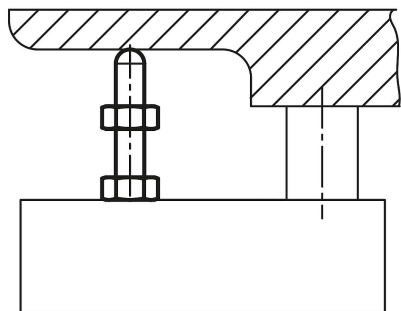


Support bolts

Item description/product images



Description

Material:

Carbon steel, tempered.

Version:

Black oxidised.

Note:

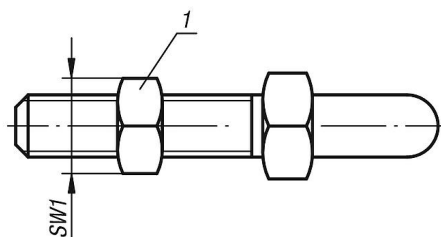
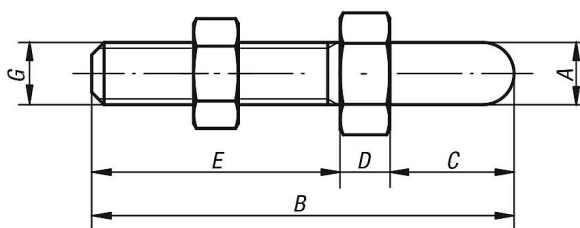
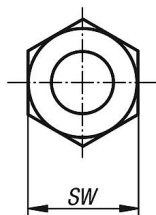
The rounded nose also allows support bolts to be used as positioning elements for workpieces with matching holes.

The versions K0297.20020 and K0297-20040 have an octagonal collar.

Drawing reference:

1) locknut

Drawings



Overview of items

Support bolts

Order No.	A	B	C	D	E	G	SW	SW1
K0297.06006	6	37	6	6	25	M6	13	10
K0297.06012	6	43	12	6	25	M6	13	10
K0297.08008	8	45	8	7	30	M8	13	13
K0297.08016	8	53	16	7	30	M8	13	13
K0297.10010	10	58	10	8	40	M10	17	17
K0297.10020	10	68	20	8	40	M10	17	17
K0297.12012	12	72	12	10	50	M12	19	19
K0297.12024	12	84	24	10	50	M12	19	19
K0297.16016	16	89	16	13	60	M16	24	24
K0297.16032	16	105	32	13	60	M16	24	24
K0297.20020	20	115	20	15	80	M20	36	30

Support bolts

Overview of items

Order No.	A	B	C	D	E	G	SW	SW1
K0297.20040	20	135	40	15	80	M20	36	30