

Recessed handles, stainless steel, fold-down, round

Item description/product images



Description

Material:

Stainless steel 1.4301.

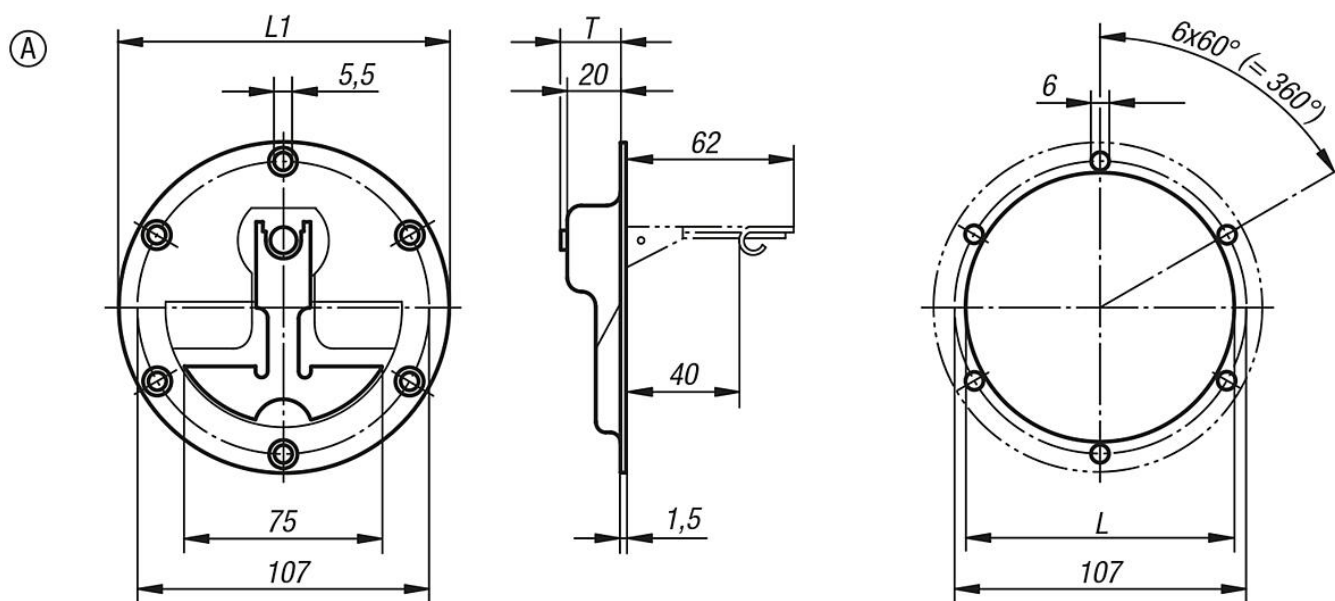
Version:

High-gloss electropolished.

Note:

Stainless steel retractable grips with marginal installation depth. For base and mounting plates or drawers. With return spring. The grip automatically swivels back into its resting position after use.

Drawings



Overview of items

Fitting grip in stainless steel

| Order No. | Form | Version 2 | H | L | L1 | T | Load capacity N |
|---------------|------|-----------|-----|----|-----|----|-----------------|
| K0243.1120000 | A | screw on | 120 | 98 | 120 | 22 | 200 |

