

## Cam clamps with riser

### Item description/product images



### Description

**Material:**

Steel.

**Version:**

Body tempered and black oxidised.

Locking washer case-hardened and brass-plated.

**Note:**

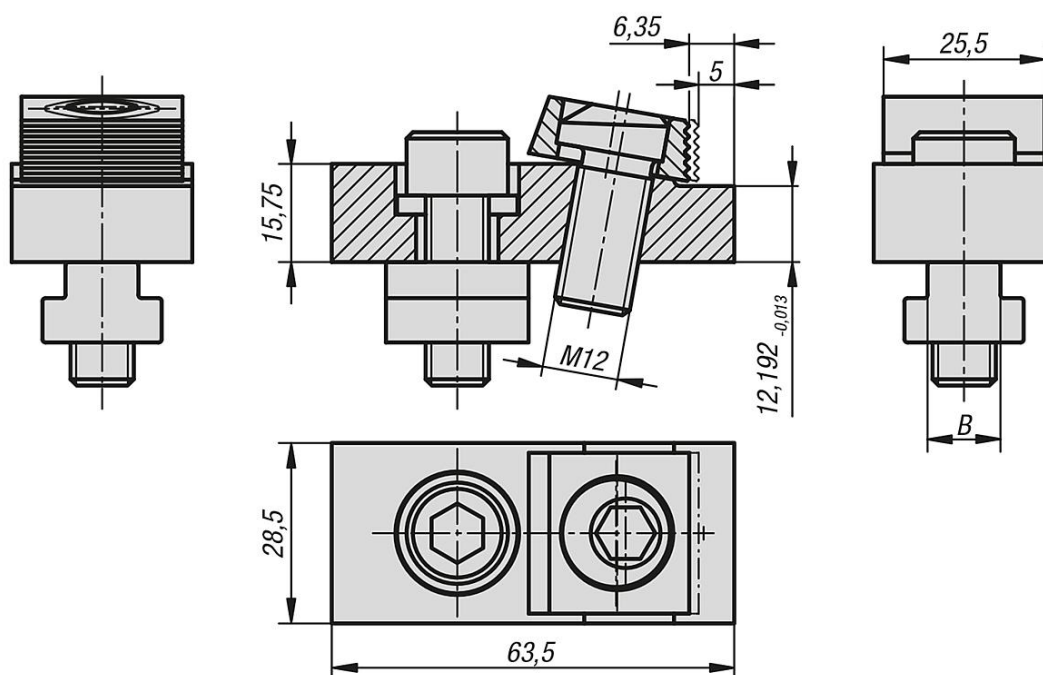
Also called riser clamps.

These cam clamps with riser can be used directly on machine tables. A positive down force is exerted during clamping.

**On request:**

Replacement cam screws.

### Drawings



### Overview of items

#### Cam clamps with riser

Order No.	B Slot width	Clamping force kN	Accessories KIPP
K0028.12	12	12	-
K0028.14	14	12	K1969.1216
K0028.16	16	12	K1969.1216
K0028.18	18	12	K1969.1216

## Cam clamps with riser

### Overview of items

---