

Pendulum jaws 5-axis-clamping-system compact

Item description/product images



Description

Material:

Body mild steel.

Jaw plates tool steel.

Version:

Body black oxidised.

Vice jaws hardened, bright.

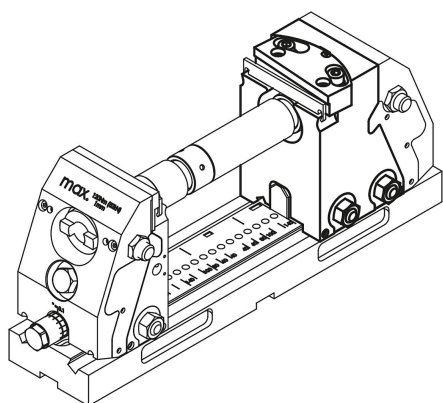
Note:

Pendulum jaws are used to hold oblique workpieces.

The jaw plates of the pendulum jaws can be swivelled by $\pm 4^\circ$.

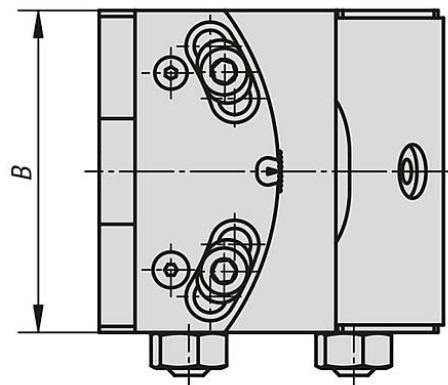
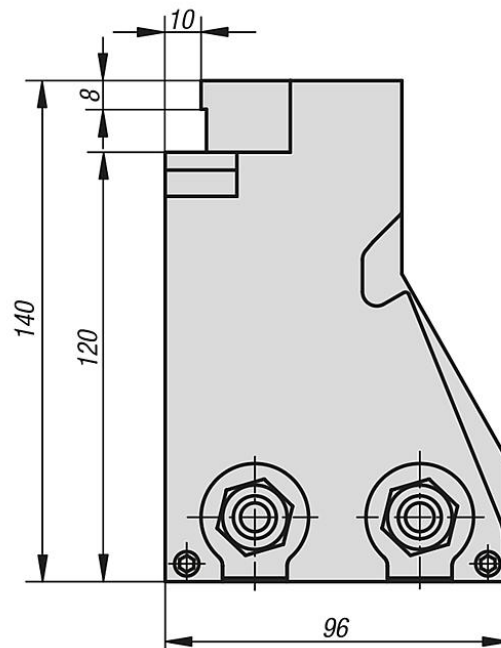
Pendulum jaws can also be used as fixed jaws.

Rigid design with 2 fastening screws.



Pendulum jaws 5-axis-clamping-system compact

Drawings



Overview of items

Pendulum jaws, 5-axis-clamping-system compact

Order No.	B	weight kg
K0988.09015010	90	6
K0988.12515010	125	8,77