

Mushroom knobs biopolymer internal thread

Item description/product images



Description

Material:

Biopolymer wood fibre reinforced, natural beech.

Biopolymer fibreglass reinforced, black grey.

Bush stainless steel 1.4305.

Version:

Natural beech with wood fibre optic or coloured black grey.

Bush bright stainless steel.

Note:

Good mechanical strength (tested to a minimum of 2x safety factor).

Good chemical resistance.

Suitable for outdoor use (weather resistant).

Advantages:

This biopolymer is manufactured entirely from renewable raw materials (oil free).

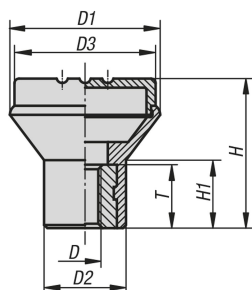
Good CO₂ impact compared to petroleum-based plastics.

Conservation of finite fossil resources.

The wood fibres originate 100% from local, sustainably managed forests in Germany.

Biopolymer is suitable for recycling (comparable to thermoplastics).

Drawings



Overview of items

Order No.	Main colour	Size	D	D1	D2	D3	H	H1	T
K0251.10005143	natural beech	1	M5	21	12	19	21	10	10
K0251.10006143	natural beech	2	M6	25	14	23	25	12	10
K0251.10008143	natural beech	3	M8	33	18	31	33	15	14
K0251.1000590	black grey RAL 7021	1	M5	21	12	19	21	10	10
K0251.1000690	black grey RAL 7021	2	M6	25	14	23	25	12	10
K0251.1000890	black grey RAL 7021	3	M8	33	18	31	33	15	14