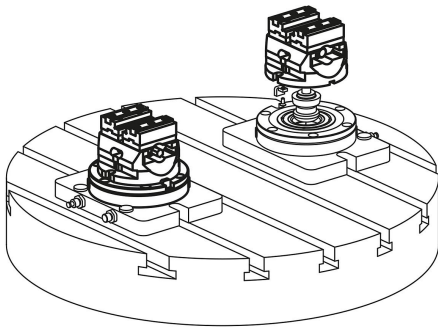


## Centric vices jaw width 65 mm

### Item description/product images



### Description

**Material:**

Body and jaw holder mild steel.  
Spindle high-strength special steel.

**Version:**

Body and jaw holder hardened and ground.

**Note for ordering:**

Supplied with hexagon crank handle.  
Order jaw plates separately.

**Note:**

Mechanically operated centric vice.  
Suitable for automation: prepared with gripper slot for handling systems.  
Flexible mounting: suitable for zero-point systems, mounting on machine tables or on custom systems via a baseplate.  
Centring precision:  $\pm 0.02$  mm.

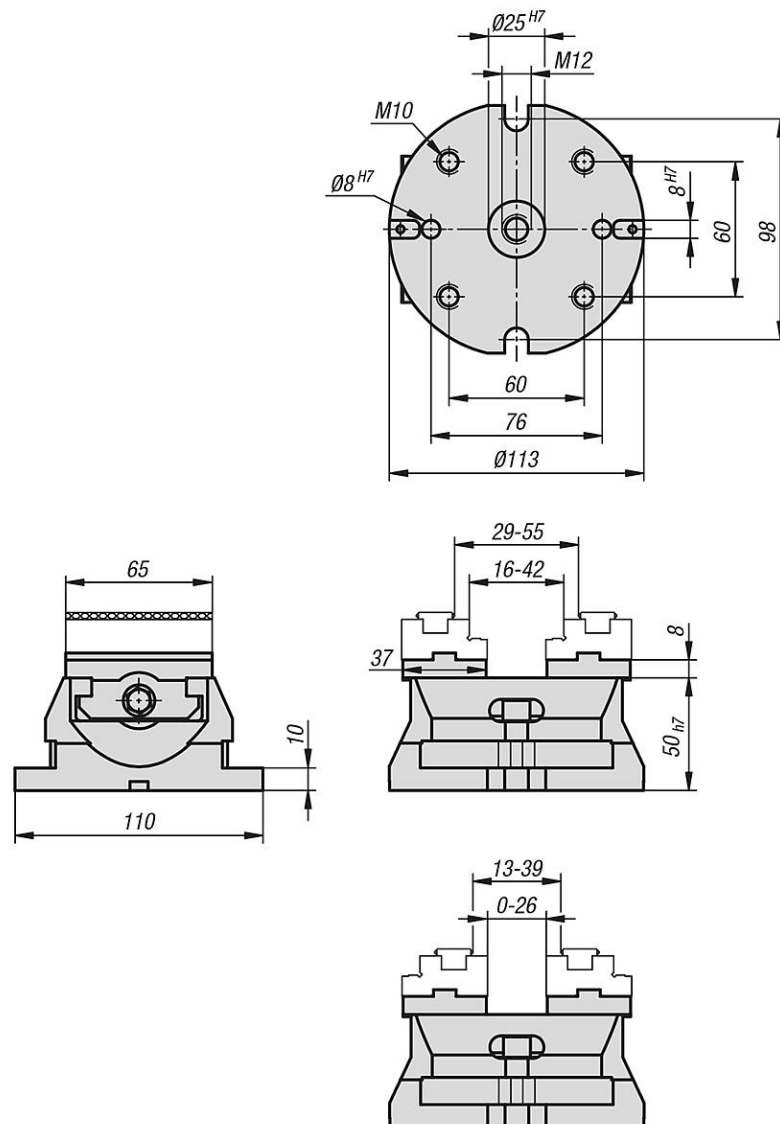
The use of a torque wrench is recommended to achieve a controlled clamping force.

**Features:**

- Clamping slide and spindle nut in one piece
- Slots and fastening threads for mounting attachment jaws
- Reversible jaws (accessories) with lateral thread for workpiece stop enables a wider clamping range
- Good swarf and coolant removal

# Centric vices jaw width 65 mm

## Drawings



## Overview of items

### Centric vice jaw width 65 mm

Order No.	Dimensions	weight kg
K1236.065100	see drawing	2,95