

Attachment step jaws for centric vice, jaw width 80–125 mm, Form A

Item description/product images



Description

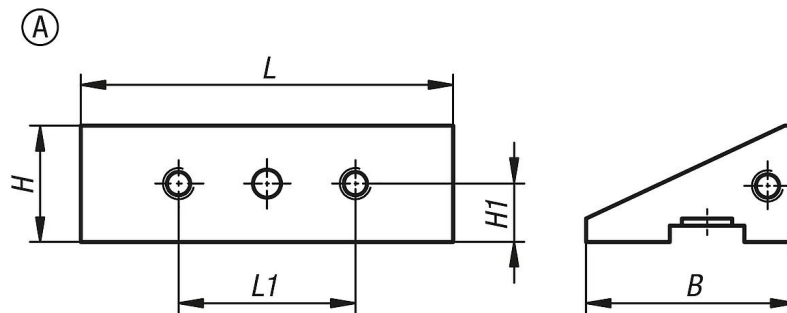
Material:
Steel.

Version:
Hardened.

Note:
Attachment step jaws are the base onto which the jaw pads are screwed. They in turn are screwed directly onto the centric vice base. They enable various jaw plates to be exchanged quickly.

Suitable for K1237

Drawings



Overview of items

| Order No. | Form | B | H | H1 | L | L1 |
|-------------|------|----|----|------|----|----|
| K1384.08025 | A | 45 | 25 | 12,5 | 80 | 38 |