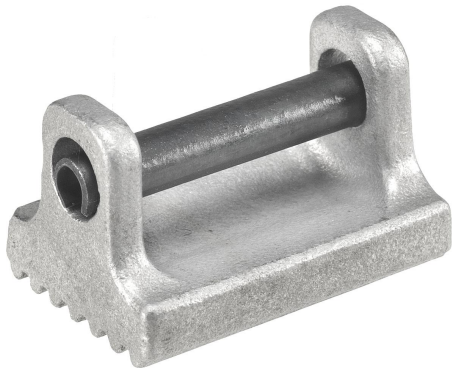


Thrust pads for power clamp, Form B, serrated

Item description/product images

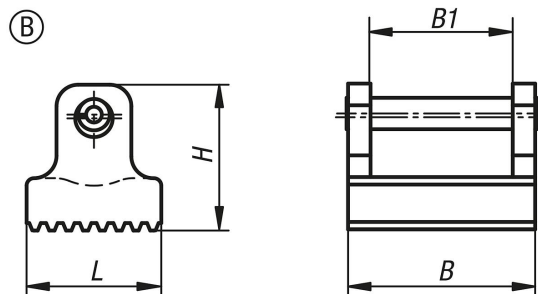


Description

Material:
Stainless steel

Note:
Power clamps can be fitted with serrated thrust pads.

Drawings



Overview of items

Order No.	Form	B	B1	H	L
K1215.119	B	19	13	14	12
K1215.125	B	25	19	19,5	18
K1215.130	B	30	21	24	20
K1215.136	B	36	26	28	25