

Bullseye levels in round frame, Form A

Item description/product images



Description

Material:

Frame brass.

Bullseye level body polyamide.

Version:

Nickel-plated and high-gloss polished.

Note:

Bubble levels are used as a type of zero indicator instrument for checking horizontal inclination in e.g. spirit levels, inclinometers, metrology instruments and machine constructions.

Form B can be fastened using a grub screw.

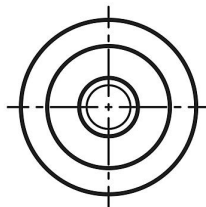
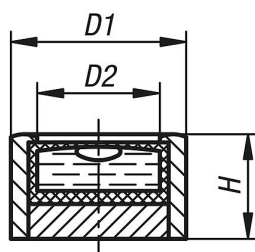
- Sensitivity in angular minutes for 2 mm bubble travel
- The bullseye level is calibrated to the seating face of frame
- Clear filling
- Black contrast ring
- White level base

Temperature range:

-35 °C up to +55 °C.

Drawings

(A)



Overview of items

Order No.	Form	D1	D2	H	Sensitivity
K1155.1140930	A	14	10	9,5	30'
K1155.1181130	A	18	12	11	30'
K1155.1201230	A	20	14	12	30'

Bullseye levels in round frame, Form A**Overview of items**

Order No.	Form	D1	D2	H	Sensitivity
K1155.1301530	A	30	21	15	30'