

Shoulder screws with hexagon head similar to DIN 609

Item description/product images



Description

Material:

Steel.

Version:

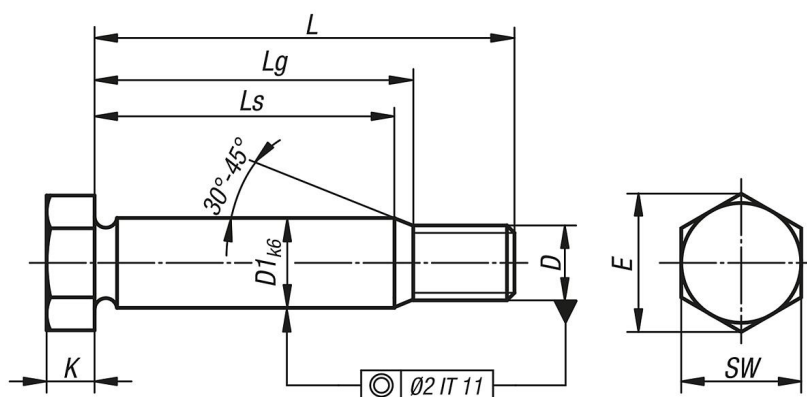
Grade 8.8, black oxidised.

Shaft OD ground.

Note:

Shoulder screws are used if the screw connection is subjected to transverse forces or if workpieces must be positioned relative to each other.

Drawings



Overview of items

Shoulder screws with hexagon head, similar to DIN 609

Order No.	D1	D	E	K	L	Ls min.	Lg max.	SW
K0706.09X25	9	M8	14,38	5,3	25	8	11,6	13
K0706.09X30	9	M8	14,38	5,3	30	13	16,6	13
K0706.09X35	9	M8	14,38	5,3	35	18	21,6	13
K0706.09X40	9	M8	14,38	5,3	40	23	26,6	13
K0706.09X45	9	M8	14,38	5,3	45	28	31,6	13
K0706.09X50	9	M8	14,38	5,3	50	33	36,6	13
K0706.09X60	9	M8	14,38	5,3	60	41	44,6	13
K0706.11X30	11	M10	17,77	6,4	30	10	13,9	17
K0706.11X35	11	M10	17,77	6,4	35	15	18,9	17
K0706.11X40	11	M10	17,77	6,4	40	20	23,9	17
K0706.11X45	11	M10	17,77	6,4	45	25	28,9	17

Shoulder screws with hexagon head similar to DIN 609

Overview of items

Order No.	D1	D	E	K	L	Ls min.	Lg max.	SW
K0706.11X50	11	M10	17,77	6,4	50	30	33,9	17
K0706.11X60	11	M10	17,77	6,4	60	38	41,9	17
K0706.11X70	11	M10	17,77	6,4	70	48	51,9	17
K0706.11X80	11	M10	17,77	6,4	80	58	61,9	17
K0706.11X90	11	M10	17,77	6,4	90	68	71,9	17
K0706.11X100	11	M10	17,77	6,4	100	78	81,9	17
K0706.13X35	13	M12	19,85	7,5	35	11,5	15,7	19
K0706.13X40	13	M12	19,85	7,5	40	16,5	20,7	19
K0706.13X45	13	M12	19,85	7,5	45	21,5	25,7	19
K0706.13X50	13	M12	19,85	7,5	50	26,5	30,7	19
K0706.13X60	13	M12	19,85	7,5	60	34,5	38,7	19
K0706.13X70	13	M12	19,85	7,5	70	44,5	48,7	19
K0706.13X80	13	M12	19,85	7,5	80	54,5	58,7	19
K0706.13X90	13	M12	19,85	7,5	90	64,5	68,7	19
K0706.13X100	13	M12	19,85	7,5	100	74,5	78,7	19
K0706.17X40	17	M16	26,17	10	40	11,5	16	24
K0706.17X45	17	M16	26,17	10	45	16,5	21	24
K0706.17X50	17	M16	26,17	10	50	21,5	26	24
K0706.17X60	17	M16	26,17	10	60	29,5	34	24
K0706.17X70	17	M16	26,17	10	70	39,5	44	24
K0706.17X80	17	M16	26,17	10	80	49,5	54	24
K0706.17X90	17	M16	26,17	10	90	59,5	64	24
K0706.17X100	17	M16	26,17	10	100	69,5	74	24
K0706.21X50	21	M20	32,95	12,5	50	17,5	22,7	30
K0706.21X60	21	M20	32,95	12,5	60	25,5	30,7	30
K0706.21X70	21	M20	32,95	12,5	70	35,5	40,7	30
K0706.21X80	21	M20	32,95	12,5	80	45,5	50,7	30
K0706.21X90	21	M20	32,95	12,5	90	55,5	60,7	30
K0706.21X100	21	M20	32,95	12,5	100	65,5	70,7	30
K0706.21X120	21	M20	32,95	12,5	120	85,5	90,7	30
K0706.25X60	25	M24	39,35	15	60	19	24,8	36
K0706.25X70	25	M24	39,35	15	70	29	34,8	36
K0706.25X80	25	M24	39,35	15	80	39	44,8	36
K0706.25X90	25	M24	39,35	15	90	49	54,8	36
K0706.25X100	25	M24	39,35	15	100	59	64,8	36
K0706.25X120	25	M24	39,35	15	120	79	84,8	36