

Levelling feet plates ECO, Form A

Item description/product images



Description

Material:

Plates thermoplastic; die-cast zinc or stainless steel 1.4305.

Version:

Thermoplastic plate black.

Die-cast zinc plate blue electro zinc-plated.

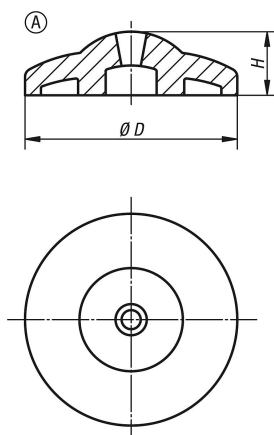
Stainless steel plate bright.

Note:

Levelling feet ECO consist of a plate and a threaded spindle. Any plate can be combined with any threaded spindle.

For matching threaded spindles see K0429.

Drawings



Overview of items

Order No.	Form	Main material	D	H	Load rating max. kN
K0428.10301	A	zinc	30	11,5	16
K0428.10401	A	zinc	40	12	18
K0428.10501	A	zinc	50	14,5	20
K0428.10302	A	stainless steel	30	11,5	22
K0428.10402	A	stainless steel	40	12	24
K0428.10502	A	stainless steel	50	14,5	26
K0428.10303	A	thermoplastic	30	11,5	15
K0428.10403	A	thermoplastic	40	12	15
K0428.10503	A	thermoplastic	50	14,5	15