

Swivel castor, electrically conductive

Item description/product images



Description

Material:

Housing steel plate.

Wheels with thermoplastic rubber tread.

Wheel body polypropylene.

Version:

Housing press formed.

Double ball bearing in the castor head.

Plain bearing in wheels.

Note:

Wheel axle threaded. Swivel castors with mounting plate. Electrically conductive wheels, non-marking grey. The ohmic resistance of the wheel $\leq 10^4 \Omega$.

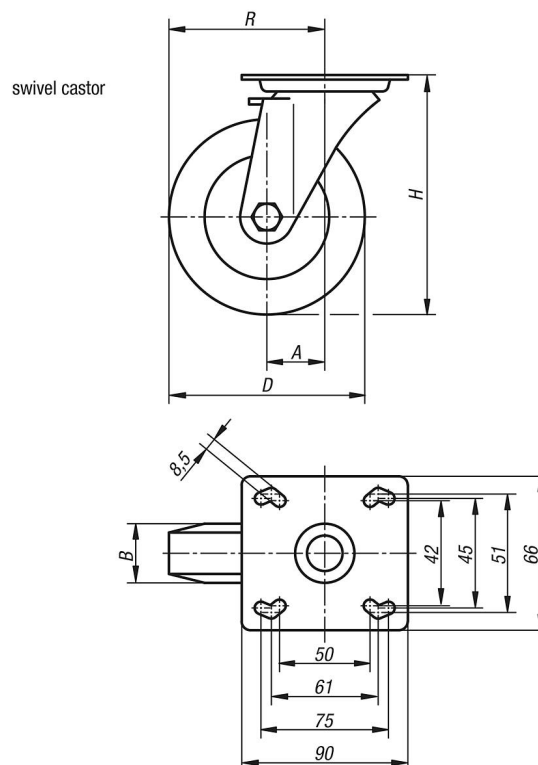
Application:

Electrically conductive wheels on swivel and fixed castors are used to protect against electrostatic discharge generated by transport equipment or the transported goods. Damage to sensitive goods and painful electrostatic shocks to the personal is so prevented.

Temperature range:

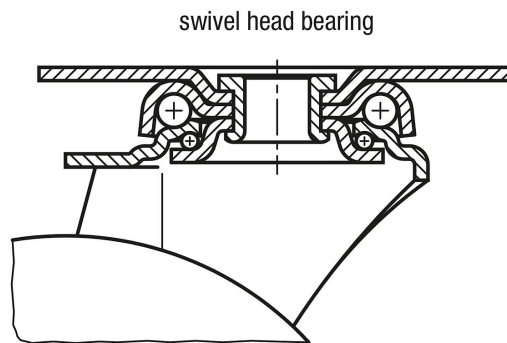
-20 °C to +60 °C.

Drawings



Swivel castor, electrically conductive

Drawings



Overview of items

Order No.	Item	Version 1	Wheel bearing	A	B	D	H	R	Permissible load kg
K1760.1108032	Swivel castor	without locking system	plain bearing	40	32	80	111	80	65
K1760.1110032	Swivel castor	without locking system	plain bearing	40	32	100	136	90	70
K1760.1112532	Swivel castor	without locking system	plain bearing	40	32	125	161	102,5	80