

## Magnets shallow pot with internal thread hard ferrite

### Item description/product images



### Description

**Material:**

Housing, steel.  
Magnetic core hard ferrite.

**Version:**

Housing, electro zinc-plated.

**Note:**

Shielded system.

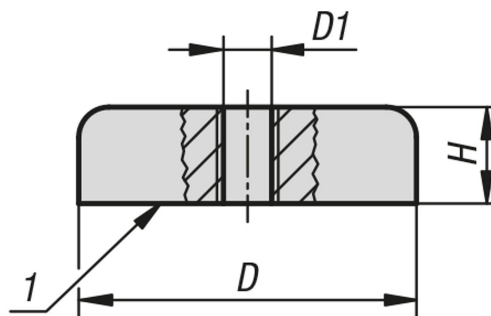
**Temperature range:**

max. 200°C.

**Drawing reference:**

1) magnetic face

### Drawings



### Overview of items

#### Magnets shallow pot with internal thread, hard ferrite

Order No.	D	D1	H	Magnetic force N
K1394.2504	25 ±0,15	M4	7	36
K1394.3204	32 ±0,2	M4	7	75
K1394.4004	40 ±0,2	M4	8	90
K1394.5006	50 ±0,2	M6	10	170
K1394.5008	50 ±0,2	M8	10	170
K1394.6308	63 ±0,2	M8	14	290
K1394.8008	80 ±0,25	M8	18	550
K1394.8010	80 ±0,25	M10	18	550