

## Swivel feet threaded spindles steel or stainless steel

### Item description/product images



### Description

#### Material:

Steel or 1.4305 stainless steel.

#### Version:

Steel trivalent blue passivated.

Stainless steel, bright.

#### Note:

Swivel feet consist of a threaded spindle and a plate joined together. Any threaded spindle can be combined with any plate.

The height of the complete swivel foot can be calculated from the length of the threaded spindle + height of hexagon + 22.5 mm.

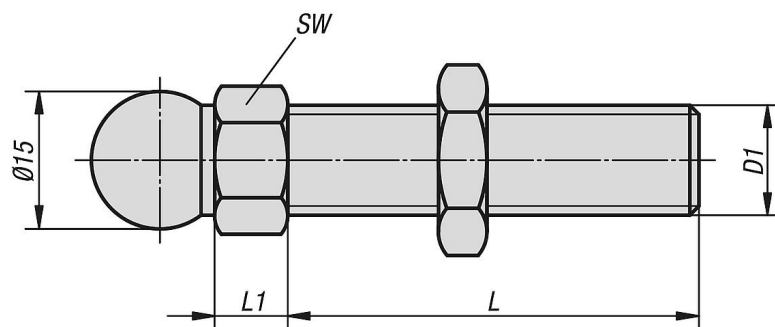
(Overall height of swivel foot =  $L + L1 + 22.5$  mm)

Depending on the version, threaded spindles can have a thread undercut in front of the hexagon.

#### Accessory:

- K0415 Swivel feet plates plastic.
- K0415 Swivel feet plates antistatic.
- K0416 Swivel feet plates die-cast zinc or stainless steel.
- K0654 Swivel feet plates extended plastic.
- K0417 Swivel feet plates extended die-cast zinc.
- K0418 Swivel feet plates stainless steel.
- K0419 Swivel feet plates with vibration absorption.

### Drawings



### Overview of items

## Swivel feet threaded spindles steel or stainless steel

### Overview of items

#### Swivel feet threaded spindles

Order No.	Main material	D1	L	L1	SW	Load rating max. kN
K0421.060151	steel	M6	15	7,5	14	2
K0421.060301	steel	M6	30	7,5	14	2
K0421.080401	steel	M8	40	7,5	14	3,5
K0421.080801	steel	M8	80	7,5	14	3,5
K0421.100451	steel	M10	45	7,5	14	4,7
K0421.100701	steel	M10	70	7,5	14	4,7
K0421.100901	steel	M10	90	7,5	14	4,7
K0421.101251	steel	M10	125	7,5	14	4,7
K0421.101501	steel	M10	150	7,5	14	4,7
K0421.120451	steel	M12	45	7,5	14	7,7
K0421.120661	steel	M12	66	7,5	14	7,7
K0421.121001	steel	M12	100	7,5	14	7,7
K0421.121251	steel	M12	125	7,5	14	7,7
K0421.121501	steel	M12	150	7,5	14	7,7
K0421.140661	steel	M14	66	7,5	14	11,1
K0421.141001	steel	M14	100	7,5	14	11,1
K0421.141251	steel	M14	125	7,5	14	11,1
K0421.141501	steel	M14	150	7,5	14	11,1
K0421.160661	steel	M16	66	7,5	17	14,5
K0421.161001	steel	M16	100	7,5	17	14,5
K0421.161251	steel	M16	125	7,5	17	14,5
K0421.161501	steel	M16	150	7,5	17	14,5
K0421.162001	steel	M16	200	7,5	17	14,5
K0421.200851	steel	M20	85	10,5	22	24,3
K0421.201001	steel	M20	100	10,5	22	24,3
K0421.201251	steel	M20	125	10,5	22	24,3
K0421.201501	steel	M20	150	10,5	22	24,3
K0421.202001	steel	M20	200	10,5	22	24,3
K0421.240851	steel	M24	85	10,5	24	36,1
K0421.241001	steel	M24	100	10,5	24	36,1
K0421.241251	steel	M24	125	10,5	24	36,1
K0421.241501	steel	M24	150	10,5	24	36,1
K0421.242001	steel	M24	200	10,5	24	36,1
K0421.060152	stainless steel	M6	15	7,5	14	2
K0421.060302	stainless steel	M6	30	7,5	14	2
K0421.080402	stainless steel	M8	40	7,5	14	3,5
K0421.080802	stainless steel	M8	80	7,5	14	3,5
K0421.100452	stainless steel	M10	45	7,5	14	4,7
K0421.100702	stainless steel	M10	70	7,5	14	4,7
K0421.100902	stainless steel	M10	90	7,5	14	4,7
K0421.101252	stainless steel	M10	125	7,5	14	4,7
K0421.101502	stainless steel	M10	150	7,5	14	4,7
K0421.120452	stainless steel	M12	45	7,5	14	7,7
K0421.120662	stainless steel	M12	66	7,5	14	7,7
K0421.121002	stainless steel	M12	100	7,5	14	7,7
K0421.121252	stainless steel	M12	125	7,5	14	7,7
K0421.121502	stainless steel	M12	150	7,5	14	7,7
K0421.140662	stainless steel	M14	66	7,5	14	11,1
K0421.141002	stainless steel	M14	100	7,5	14	11,1
K0421.141252	stainless steel	M14	125	7,5	14	11,1
K0421.141502	stainless steel	M14	150	7,5	14	11,1
K0421.160662	stainless steel	M16	66	7,5	17	14,5
K0421.161002	stainless steel	M16	100	7,5	17	14,5
K0421.161252	stainless steel	M16	125	7,5	17	14,5
K0421.161502	stainless steel	M16	150	7,5	17	14,5
K0421.162002	stainless steel	M16	200	7,5	17	14,5
K0421.200852	stainless steel	M20	85	10,5	22	24,3
K0421.201002	stainless steel	M20	100	10,5	22	24,3
K0421.201252	stainless steel	M20	125	10,5	22	24,3
K0421.201502	stainless steel	M20	150	10,5	22	24,3

## Swivel feet threaded spindles steel or stainless steel

### Overview of items

Order No.	Main material	D1	L	L1	SW	Load rating max. kN
K0421.202002	stainless steel	M20	200	10,5	22	24,3
K0421.240852	stainless steel	M24	85	10,5	24	36,1
K0421.241002	stainless steel	M24	100	10,5	24	36,1
K0421.241252	stainless steel	M24	125	10,5	24	36,1
K0421.241502	stainless steel	M24	150	10,5	24	36,1
K0421.242002	stainless steel	M24	200	10,5	24	36,1