

UNILOCK clamping module risers ESM 138-C

Item description/product images



Description

Product description:

These module risers can be mounted on UNILOCK clamping modules via two zero point exchange interfaces. Mounting is possible with a centre-to-centre distance of 200 mm between two clamping modules. The module risers ensure that fixtures or workpieces can be exchanged within the machine compartment quickly and with repeat accuracy. These clamping systems offer optimum access for workpiece machining through raised or angled exchange interfaces. In addition, the use of the module risers ensures a centred alignment in the machine compartment. Machining on several sides is possible through orientated positioning of the clamping position.

Material:

Body tool steel.
Clamping module case-hardening steel.

Version:

Clamping module contact surfaces case-hardened and ground.

Note:

The high clamping forces are generated by the integrated spring packet (the unit clamps while not under pressure).
Clamping is released pneumatically.
Even in the event of a pressure drop or fluctuations in the compressed air supply, the full traction force is maintained.

All clamping modules have a turbo function included as standard. A short air impulse at the "Turbo" air port increases the normal traction force, achieved by the springs, significantly. Consequently, the clamping modules can also be used for heavy-feed machining.

Use of the turbo function for maximum traction force is recommended.

The following clamping forces are possible with the UNILOCK clamping bolt in conjunction with M10, M12, M16 fastening screws:

- Clamping force (M10) 35,000 N
 - Clamping force (M12) 50,000 N
 - Clamping force (M16) 75,000 N
- Clamping force with DIN EN ISO 4762 -12.9 cap screws

Clamping bolts may only be clamped in conjunction with a mounted interchangeable unit in the clamping module.

A consistent clamping bolt size for all clamping modules and compatibility with the 5-axis module clamping system 80 guarantees diverse applications.

Technical data:

- Traction force with turbo from 25 kN.
- System pressure: 6 bar, lubricated air.
- Repeat accuracy ≤ 0.005 mm.
- Optional port for blow-out air.

Temperature range:

+5 °C to +60 °C.

UNILOCK clamping module risers ESM 138-C

Item description/product images

Advantages:

- Turbo function as standard.
- Repeat accuracy ≤ 0.005 mm.
- Positioning via short taper..
- High traction force.
- Setup time optimisation.

Accessory:

Clamping bolts K0967.

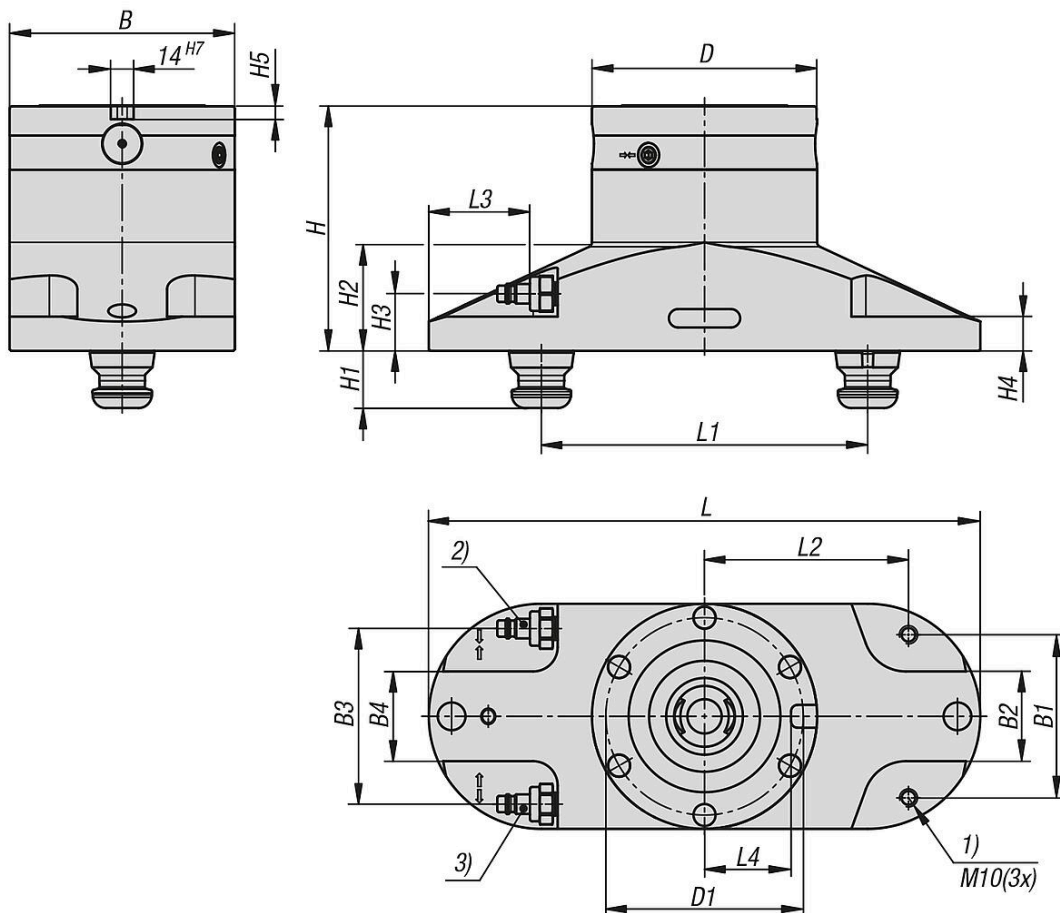
Protective bolts for clamping module K1010.

Protective plugs for clamping module K1010.

Drawing reference:

- 1) Mounting thread for hoist ring for balancing the weight distribution when pivoting
- 2) Air port G1/8, turbo function
- 3) Air port G1/8, open

Drawings



Overview of items

UNILOCK clamping module risers ESM 138-C

UNILOCK clamping module risers ESM 138-C

Overview of items

Order No.	B	B1	B2	B3	B4	D	D1	H	H1	H2	H3	H4	H5	L	L1	L2	L3	L4	P=operating pressure bar	Retraction force with turbo kN
K2353.1381501	138	100	55	107,6	55	138	121	150	35	63,5	35	21	8	338	200	125	62	53	6	25