

## Swivel castor, electrically conductive

### Item description/product images



### Description

#### Material:

Housing steel plate.

Wheels with thermoplastic rubber tread.

Wheel body polypropylene.

#### Version:

Housing press formed.

Double ball bearing in the castor head.

Plain bearing in wheels.

#### Note:

Wheel axle threaded. Swivel castors with bolt hole. Electrically conductive wheels, non-marking grey. The ohmic resistance of the wheel  $\leq 10^4 \Omega$ .

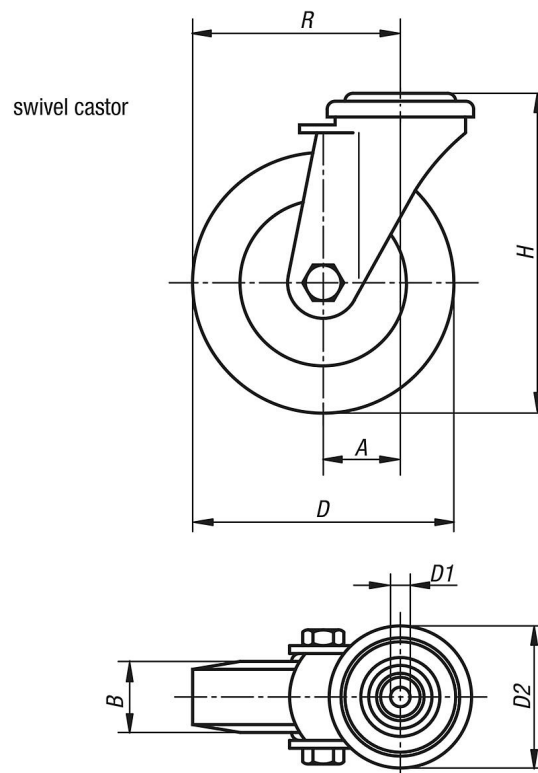
#### Application:

Electrically conductive wheels on swivel and fixed castors are used to protect against electrostatic discharge generated by transport equipment or the transported goods. Damage to sensitive goods and painful electrostatic shocks to the personal is so prevented.

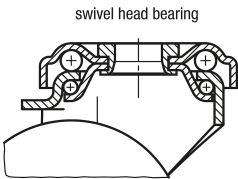
#### Temperature range:

-20 °C to +60 °C.

### Drawings



Drawings



Overview of items

| Order No.     | Item          | Version 1              | Wheel bearing | A  | B  | D   | D1 | D2 | H   | R    | Permissible load kg |
|---------------|---------------|------------------------|---------------|----|----|-----|----|----|-----|------|---------------------|
| K1759.1105019 | Swivel castor | without locking system | plain bearing | 25 | 19 | 50  | 11 | 43 | 69  | 50   | 30                  |
| K1759.1107525 | Swivel castor | without locking system | plain bearing | 29 | 25 | 75  | 11 | 43 | 98  | 66,5 | 50                  |
| K1759.1110025 | Swivel castor | without locking system | plain bearing | 33 | 25 | 100 | 11 | 43 | 121 | 83   | 60                  |