

## UNILOCK clamping bracket for UNILOCK clamping station

### Item description/product images



### Description

**Material:**

Carbon steel.

**Version:**

Body black oxidised.

**Note:**

The UNILOCK clamping brackets are used for rapid fastening of the clamping stations on all conventional machine tables.

The clamping brackets can be attached to the sides of the clamping stations or to the four rounded corners.

**Advantages:**

Rapid fastening of the UNILOCK clamping stations via adapted clamping brackets.

No fastening holes drilled through the clamping stations required.

Low, flat design eliminates protruding edges.

No swarf deposits due to the enclosed form of the clamping bracket.

The supplied screw head caps prevent the accumulation of swarf and coolants.

**Supplied with:**

Clamping bracket

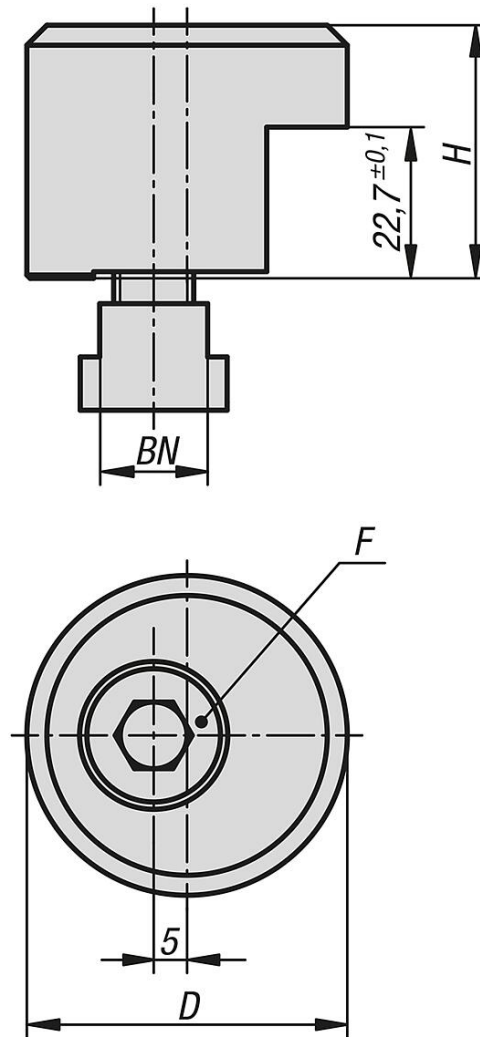
Cap for cap screw heads

Cap screw

T-slot nut (M12 = slot width 14 mm, M16 = slot width 18 mm)

# UNILOCK clamping bracket for UNILOCK clamping station

## Drawings



## Overview of items

### UNILOCK clamping bracket for UNILOCK clamping station

Order No.	D	H	BN=Slot width	F hole for ISO 4762 cap screw
K1869.482212	48	38	14	M12
K1869.482216	48	38	18	M16