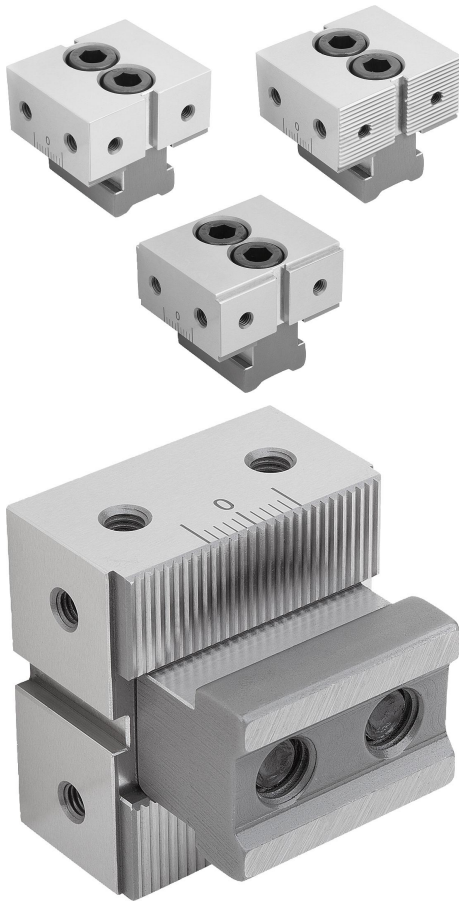


Fixed jaws DS for multi-clamping system

Item description/product images



Description

Material:
Tool steel.

Version:
Hardened and ground (HRC 55 ±2).

Note:

There are three different fixed jaw versions to choose from:

- Smooth version Form A for pre-machined workpieces.
- Serrated version Form B for raw parts.
- Offset jaws Form C for clamping with a small clamping edge.

The lateral fastening holes are used to fasten workpiece end stops. The two screw-on holes on the clamping surfaces also allow seating ledges to be mounted so as to optimise the clamping depth of the workpieces.

Application:

The DS fixed jaws are positioned on the clamping rails according to the clamping situation.

When the fastening screw is tightened, the tothing allows a form-fit connection to be created.

Fixed jaws with two fastening screws are to be preferred where higher machining forces are to be applied.

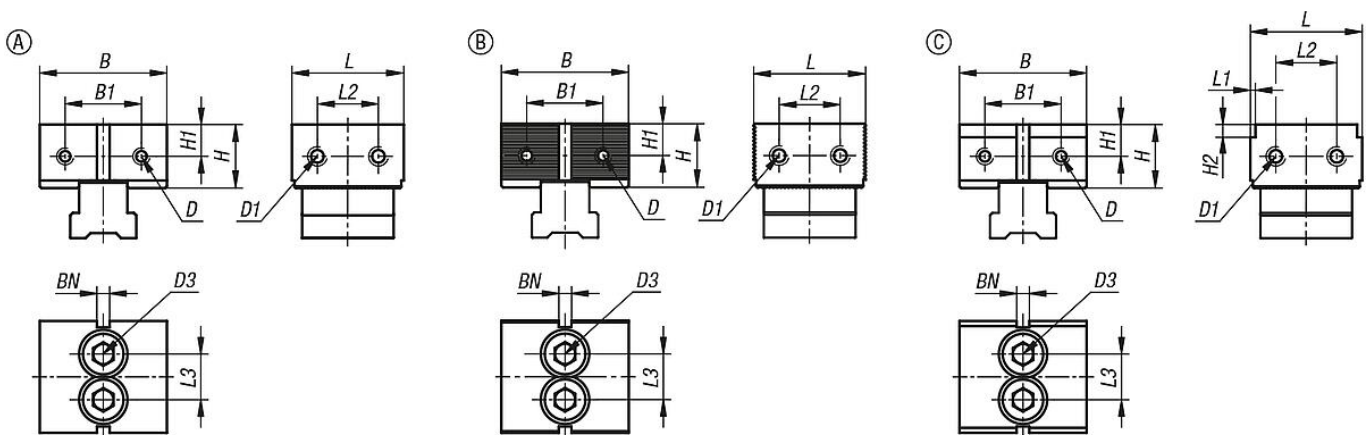
Advantages:

The lateral scale on the clamping rails and the fixed jaws allows precise positioning of the fixed stops.

Supplied with:

- DS fixed jaw.
- Fastening screw.
- Slot key.

Drawings



Overview of items

Fixed jaws DS for multi-clamping system

Fixed jaws DS for multi-clamping system

Overview of items

Order No.	suitable for system width	Form	Form definition	L	B	H	L1	L2	L3	B1	H1	H2	D Internal thread	D1 internal thread	D3	BN=Slot width
K1751.0504401	50	A	smooth	44	50	25	-	24	18	30	12,5	-	M5	M6	M10x30	5
K1751.0504402	50	B	serrated	44	50	25	-	24	18	30	12,5	-	M5	M6	M10x30	5
K1751.0504423	50	C	stepped	44	50	25	2	24	18	30	12,5	2	M5	M6	M10x30	5
K1751.0504453	50	C	stepped	44	50	25	2	24	18	30	12,5	5	M5	M6	M10x30	5