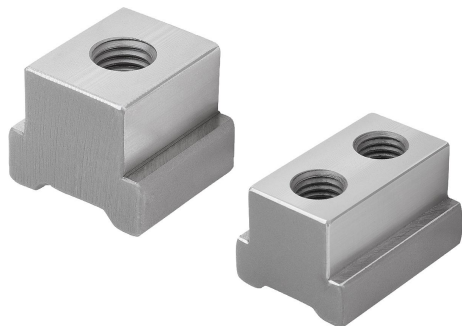


T-slot keys for wedge clamps

Item description/product images



Description

Material:
Carbon steel.

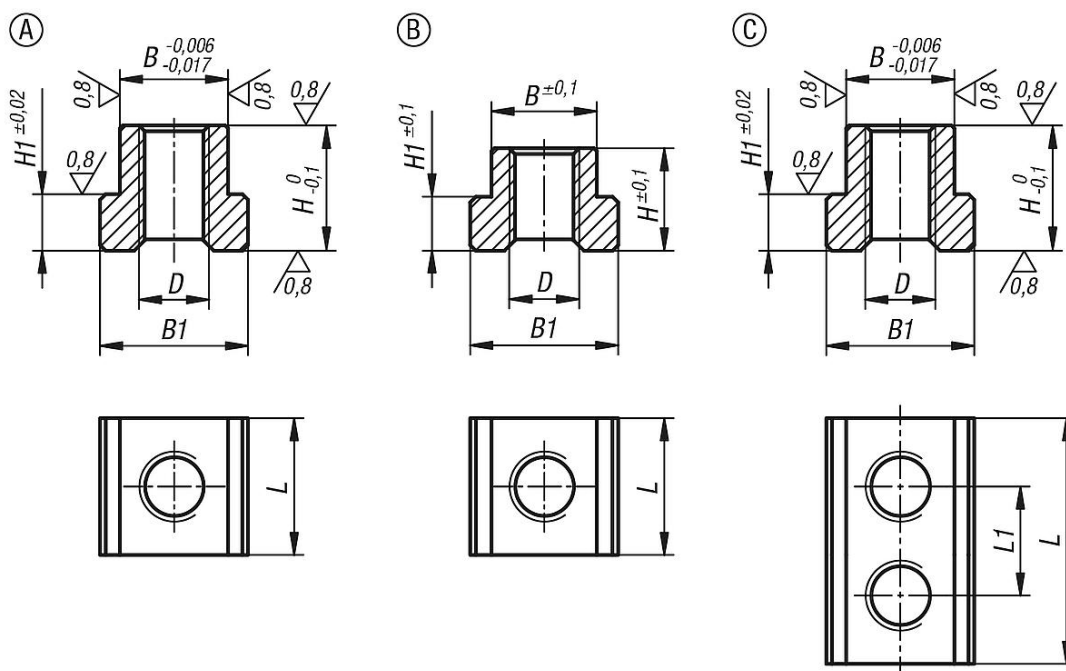
Version:
Tempered. Guide faces ground (HRC 38).

Note:
T-slot keys are matched to the multiple clamping system.
Form A/C are used for fixed stops.
Form B is for operating the clamping wedge of the clamping wedge segments.

Application:
The T-slot keys are inserted into the clamping rail at the appropriate position. The cap screw is used to screw the T-slot keys to the fixed stops and wedge clamps.

Advantages:
With Form A/C, the T-slot key has very little play in the clamping rail, so the fixed stops can also be inserted from the side.

Drawings



Overview of items

T-slot keys for wedge clamps

Order No.	suitable for system width	Suitable for	Form	L	L1	B	H	B1	H1	D Internal thread
K1758.05010241	50	fixed jaw single-sided	A	24	-	19	22	26	9,95	M10
K1758.05010361	50	fixed jaw double-sided	C	36	18	19	22	26	9,95	M10
K1758.05012241	50	wedge clamp with fixed jaw	A	24	-	19	22	26	9,95	M12
K1758.05012262	50	double-sided wedge clamp	B	26	-	18,5	18	26	9,5	M12

