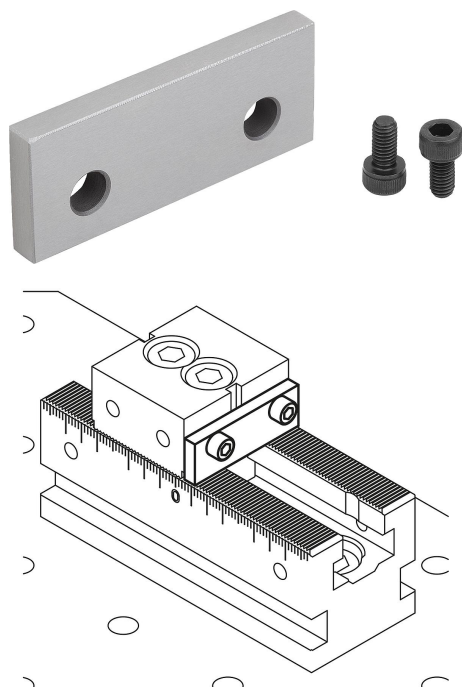


Screw-on seating ledges for multi-clamping system

Item description/product images



Description

Material:

Tool steel.

Version:

Hardened and ground (HRC 55 ±2).

Note:

The seating ledges allow different workpiece clamping depths to be set.

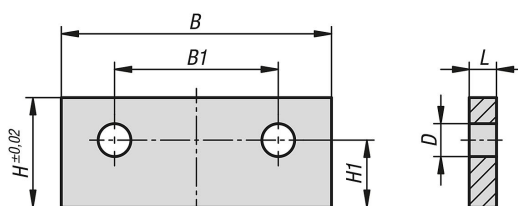
Application:

The seating ledges can be screwed together with the ES and DS fixed jaws and with the wedge clamps.

Advantages:

Quick setup of workpieces on the multiple clamping system. Uniform clamping depth of the workpieces with the ground support surface height.

Drawings



Overview of items

Screw-on seating ledges for multi-clamping system

Order No.	suitable for system width	L	B	H	B1	H1	D
K1752.050175	50	5	49,5	17	30	12,3	6
K1752.050205	50	5	49,5	20	30	12,3	6
K1752.050223	50	3	49,5	22	30	12,3	6