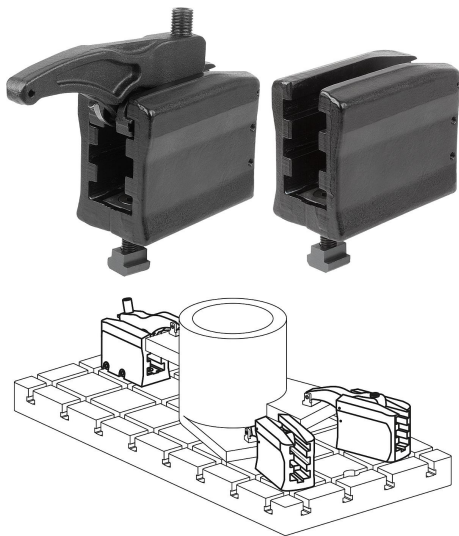


Power clamp 3 stage

Item description/product images



Description

Material:

Carbon steel.

Version:

Forged, black electro zinc-plated.

Application:

The height of the clamping arm can be infinitely adjusted using the adjustment screw and the workpiece can then be clamped.

Assembly:

1. Position the support element on the machine table and fasten using the recommended torque.
2. Bring the clamping arm into the required position.
3. Clamp the workpiece by tightening the set screw.

Advantages:

- Very high retaining forces of 22–49 kN.
- Simple element assembly.
- Enables very fast, simple clamping.
- Infinitely adjustable height and length.
- Use in 14-28 mm T-slots or M12, M16, M20 grid systems.
- Thrust pad available in smooth and serrated versions.

Supplied with:

Form A:

- Clamping unit
- 3 stage support element
- Fastening set

Form B:

- 3 stage support element
- Fastening set

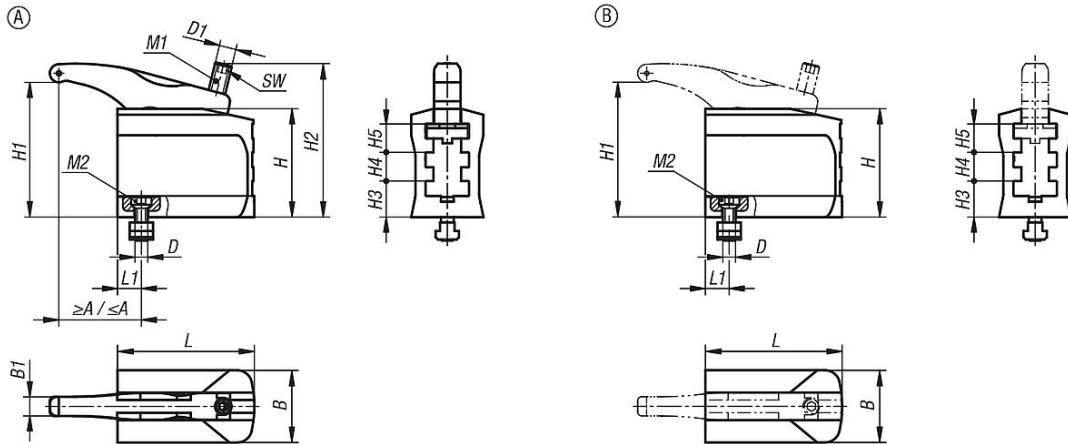
Accessory:

Raiser K1206

Thrust pads K1215

Power clamp 3 stage

Drawings



Overview of items

Power clamp 3 stage

Order No.	Version 1	Form	Form definition	H1	A min.	A max.	B	B1	Slot width	D	D1
K1664.2120651	short	A	with clamping arm	9-74	30	58	52	13	14	M12	M12
K1664.1121301	long	A	with clamping arm	13-129	37	106	68	18	14	M12	M16
K1664.1161501	long	A	with clamping arm	16-147	48	144	75	20	18	M16	M20
K1664.1201701	long	A	with clamping arm	16-169	68	172	85	25	22	M20	M24
K1664.2120650	short	B	without clamping arm	9-74	-	-	52	-	14	M12	-
K1664.1121300	long	B	without clamping arm	13-129	-	-	68	-	14	M12	-
K1664.1161500	long	B	without clamping arm	16-147	-	-	75	-	18	M16	-
K1664.1201700	long	B	without clamping arm	16-169	-	-	85	-	22	M20	-

Order No.	Version 1	Form	H	H2	H3	H4	H5	L	L1	SW	Clamping force kN	Tightening torque M1 Nm	Tightening torque M2 Nm
K1664.2120651	short	A	67	98	25	16	16	65	14,5	6	22	55	40
K1664.1121301	long	A	101	146	34	27	27	130	22,5	8	30	100	70
K1664.1161501	long	A	116	175	43	29	29	150	25	10	43	200	150
K1664.1201701	long	A	140	207	52	34	34	170	29	12	49	220	200
K1664.2120650	short	B	67	-	25	16	16	65	14,5	-	22	-	40
K1664.1121300	long	B	101	-	34	27	27	130	22,5	-	30	-	70
K1664.1161500	long	B	116	-	43	29	29	150	25	-	43	-	150
K1664.1201700	long	B	140	-	52	34	34	170	29	-	49	-	200