

# Angle plates, grey cast iron, narrow with pre-machined clamping faces

## Item description/product images



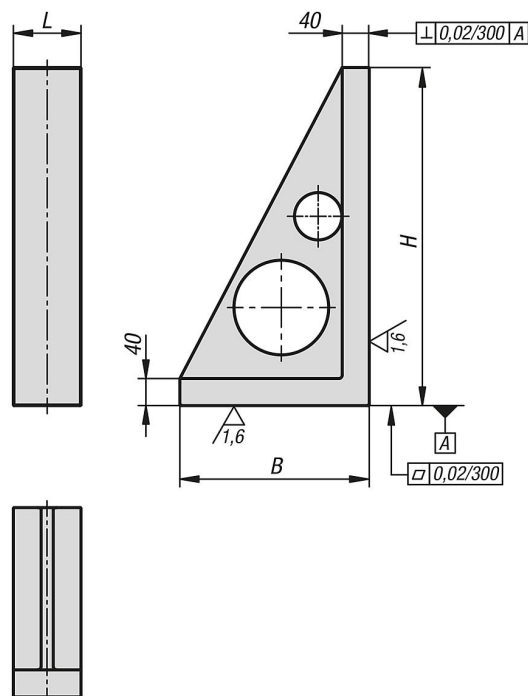
### Description

**Material:**  
GJL 300.

**Version:**  
Support and mounting surfaces precision machined

**Note:**  
Angle plates are used for the vertical positioning and mounting of workpieces and fixtures. These angle plates with pre-machined clamping faces provide a quick and economic method of producing bodies with specific grid or individual holes.

## Drawings



## Overview of items

### Angle plates, grey cast iron, narrow with pre-machined clamping faces

**Angle plates, grey cast iron, narrow with pre-machined clamping faces****Overview of items**

Order No.	L	B	H
K0807.100181030	100	180	300
K0807.100231040	100	230	400
K0807.100281050	100	280	500