

Clamping pin, steel or stainless steel with washer

Item description/product images



Description

Material:

Washer steel 1.0715.

Wedges steel 1.0715 or stainless steel 1.4305.

Version:

Washer electro zinc-plated.

Wedges black oxidised or blank.

Note:

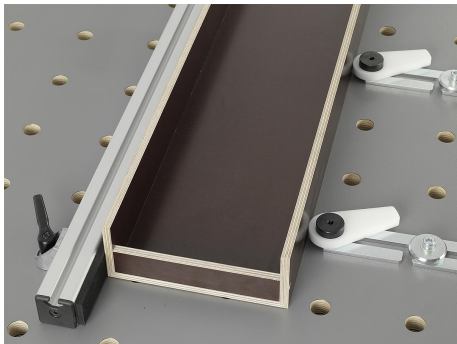
For fixating adapter plates, angles and plates open on grid hole tables or plates with $\varnothing 16$ mm, $\varnothing 20$ mm or $\varnothing 28$ mm holes. Can also be used as a point end stop for positioning and fixating exchange clamping plates. By turning the cap screw, the lock wedges expand in the bore.

Advantages:

Functions also in thin table material (metal: ≥ 8 mm or ≥ 4 mm ; wood ≥ 18 mm).

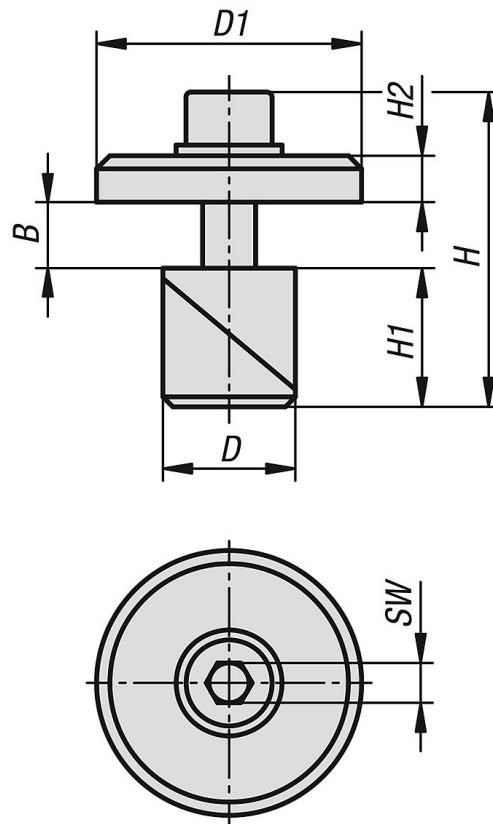
Gentle clamping in the bore.

Low height.



Clamping pin, steel or stainless steel with washer

Drawings



Overview of items

Clamping pin steel or stainless steel with washer

Order No.	Main material	D	D1	H	H1	H2	SW	B Clamp range
K1504.016	steel	16	40	48	17,5	7	6	0-14
K1504.120	stainless steel	20	40	48	21	7	6	0-10
K1504.028	steel	28	40	68	28	7	6	0-23