

Grease nipples conical head DIN 71412, Form A, straight

Item description/product images



Description

Material:

Steel or 1.4305 stainless steel.

Version:

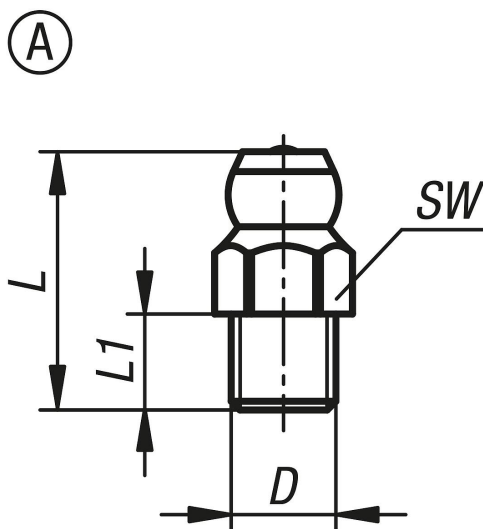
Steel hardened, min. 550 HV 1, electro zinc-plated.

Stainless steel bright.

Note:

The conical head grease nipples have a tapered thread. They are suitable for grease points which must be lubricated often and reliably. Their versatility makes them the most widespread type of grease nipple.

Drawings



Overview of items

Order No.	Form	Form definition	Main material	D	L1	L max.	SW
K1132.1106100	A	straight with hexagon socket	steel	M6X1	6	16	7
K1132.1108100	A	straight with hexagon socket	steel	M8X1	6	16	9
K1132.1108125	A	straight with hexagon socket	steel	M8X1,25	6	16	9
K1132.1110100	A	straight with hexagon socket	steel	M10X1	6	16	11
K1132.1110150	A	straight with hexagon socket	steel	M10X1,5	6	16	11
K1132.1118	A	straight with hexagon socket	steel	R1/8	6	16	11
K1132.1114	A	straight with hexagon socket	steel	R1/4	6	16	14
K1132.2106100	A	straight with hexagon socket	stainless steel	M6X1	6	16	7
K1132.2108100	A	straight with hexagon socket	stainless steel	M8X1	6	16	9
K1132.2108125	A	straight with hexagon socket	stainless steel	M8X1,25	6	16	9
K1132.2110100	A	straight with hexagon socket	stainless steel	M10X1	6	16	11

Grease nipples conical head DIN 71412, Form A, straight

Overview of items

Order No.	Form	Form definition	Main material	D	L1	L max.	SW
K1132.2110150	A	straight with hexagon socket	stainless steel	M10X1,5	6	16	11
K1132.2118	A	straight with hexagon socket	stainless steel	R1/8	6	16	11
K1132.2114	A	straight with hexagon socket	stainless steel	R1/4	6	16	14