

## Washers with large OD DIN 9021

### Item description/product images



### Description

#### Material:

Steel, stainless steel A2 or stainless steel A4.

#### Version:

Steel electro zinc-plated, hardness

$D1 \leq 14 = 140 \text{ HV}$ .

$D1 > 17 = 100 \text{ HV}$ .

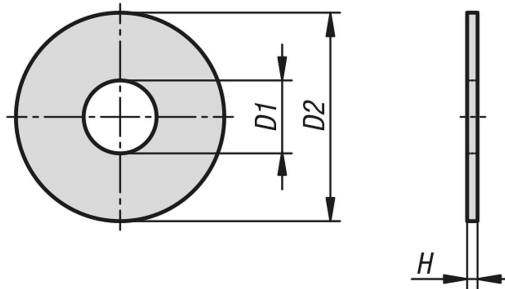
Stainless steel A2, bright.

Stainless steel A4, bright.

#### Note:

The pulleys have an OD of  $D2 = \sim 3 \times D1$ .

### Drawings



### Overview of items

#### Washers with large OD DIN 9021

Order No.	Main material	for screws	D1	D2	H
K1150.03	steel	M3	3,2	9	0,8
K1150.04	steel	M4	4,3	12	1
K1150.05	steel	M5	5,3	15	1,2
K1150.06	steel	M6	6,4	18	1,6
K1150.08	steel	M8	8,4	24	2
K1150.10	steel	M10	10,5	30	2,5
K1150.12	steel	M12	13	37	3
K1150.14	steel	M14	15	44	3
K1150.16	steel	M16	17	50	3
K1150.18	steel	M18	20	56	4
K1150.20	steel	M20	22	60	4
K1150.24	steel	M24	26	72	5
K1150.30	steel	M30	33	92	6
K1150.103	stainless steel A2	M3	3,2	9	0,8
K1150.104	stainless steel A2	M4	4,3	12	1
K1150.105	stainless steel A2	M5	5,3	15	1,2
K1150.106	stainless steel A2	M6	6,4	18	1,6
K1150.108	stainless steel A2	M8	8,4	24	2
K1150.110	stainless steel A2	M10	10,5	30	2,5
K1150.112	stainless steel A2	M12	13	37	3
K1150.114	stainless steel A2	M14	15	44	3
K1150.116	stainless steel A2	M16	17	50	3
K1150.118	stainless steel A2	M18	20	56	4
K1150.120	stainless steel A2	M20	22	60	4

## Washers with large OD DIN 9021

### Overview of items

Order No.	Main material	for screws	D1	D2	H
K1150.124	stainless steel A2	M24	26	72	5
K1150.603	stainless steel A4	M3	3,2	9	0,8
K1150.604	stainless steel A4	M4	4,3	12	1
K1150.605	stainless steel A4	M5	5,3	15	1,2
K1150.606	stainless steel A4	M6	6,4	18	1,6
K1150.608	stainless steel A4	M8	8,4	24	2
K1150.610	stainless steel A4	M10	10,5	30	2,5
K1150.612	stainless steel A4	M12	13	37	3
K1150.614	stainless steel A4	M14	15	44	3
K1150.616	stainless steel A4	M16	17	50	3
K1150.618	stainless steel A4	M18	20	56	4
K1150.620	stainless steel A4	M20	22	60	4
K1150.624	stainless steel A4	M24	26	72	5