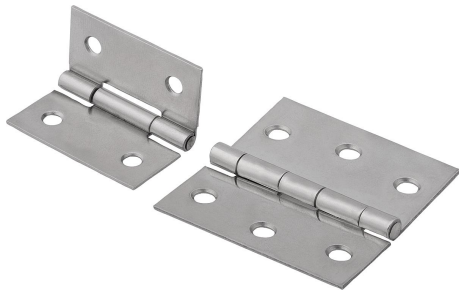


# Hinges sheet steel or sheet stainless steel

## Item description/product images



### Description

**Material:**

Steel or stainless steel 1.4301.

**Version:**

Steel electro zinc-plated.

Stainless steel bright.

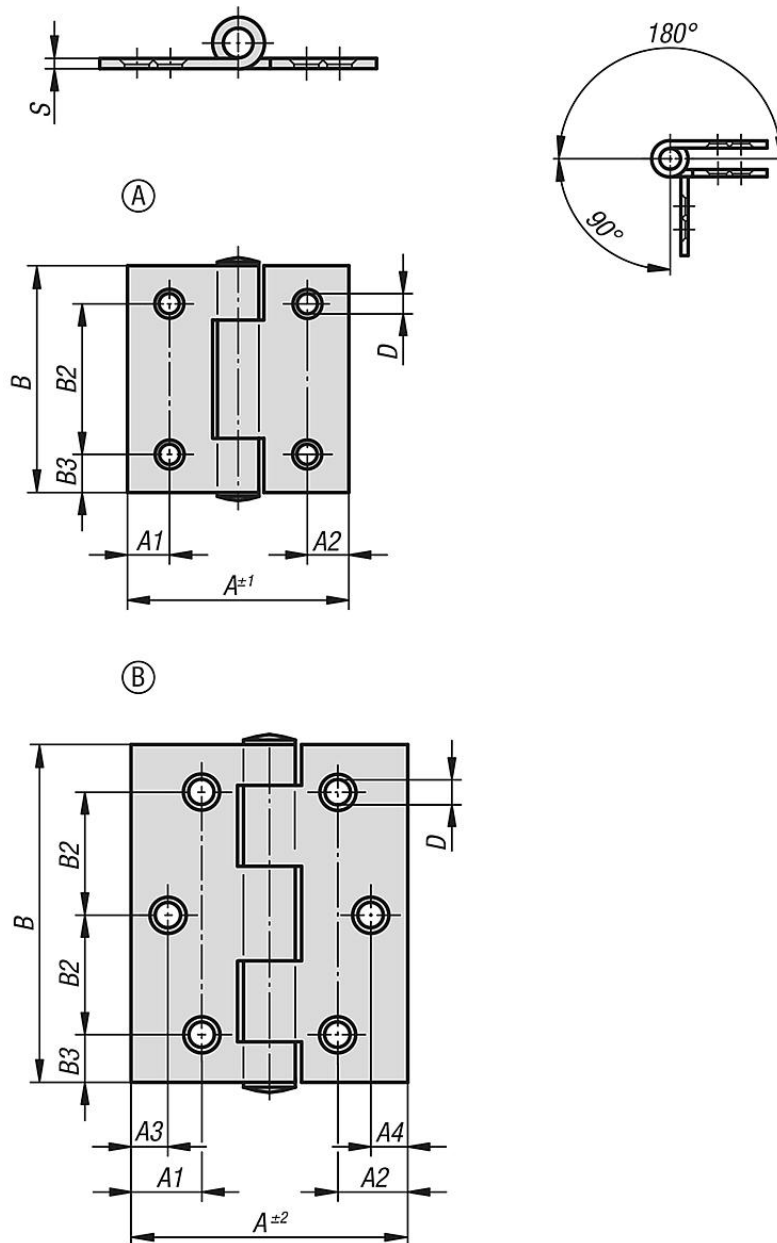
**Note:**

Rolled plate butt hinges.

Pins are riveted.

Screw holes countersunk.

## Drawings



## Hinges sheet steel or sheet stainless steel

### Overview of items

#### Hinges, sheet steel or sheet stainless steel

Order No.	Material	Form	A1	A2	A3	A4	A	B	B2	B3	D	S
K1082.04201212	steel	A	8,5	8,5	-	-	40	40	25	7,5	4	1
K1082.04301515	steel	B	15	15	8	8	60	60	22,5	7,5	4,5	1,5
K1082.104201212	stainless steel A2	A	8,5	8,5	-	-	40	40	25	7,5	4	1
K1082.104251414	stainless steel A2	B	11	11	8	8	50	50	18	7	4,5	1,25
K1082.104301515	stainless steel A2	B	15	15	8	8	60	60	22,5	7,5	4,5	1,5
K1082.105401515	stainless steel A2	B	25,3	25,3	12	12	80	80	30	10	5,2	1,5