

Cam levers single

Item description/product images



Description

Material:

Carbon steel 1.7220.

Ball grip plastic.

Version:

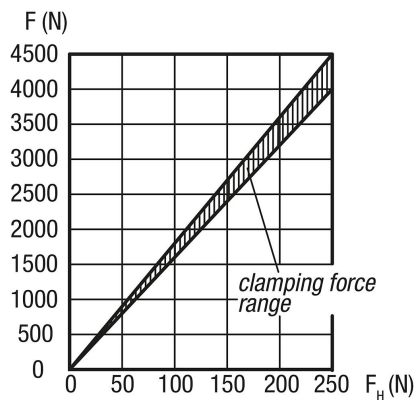
Tempered and black oxidised.

Note:

Suitable hinge pin, see K0007.

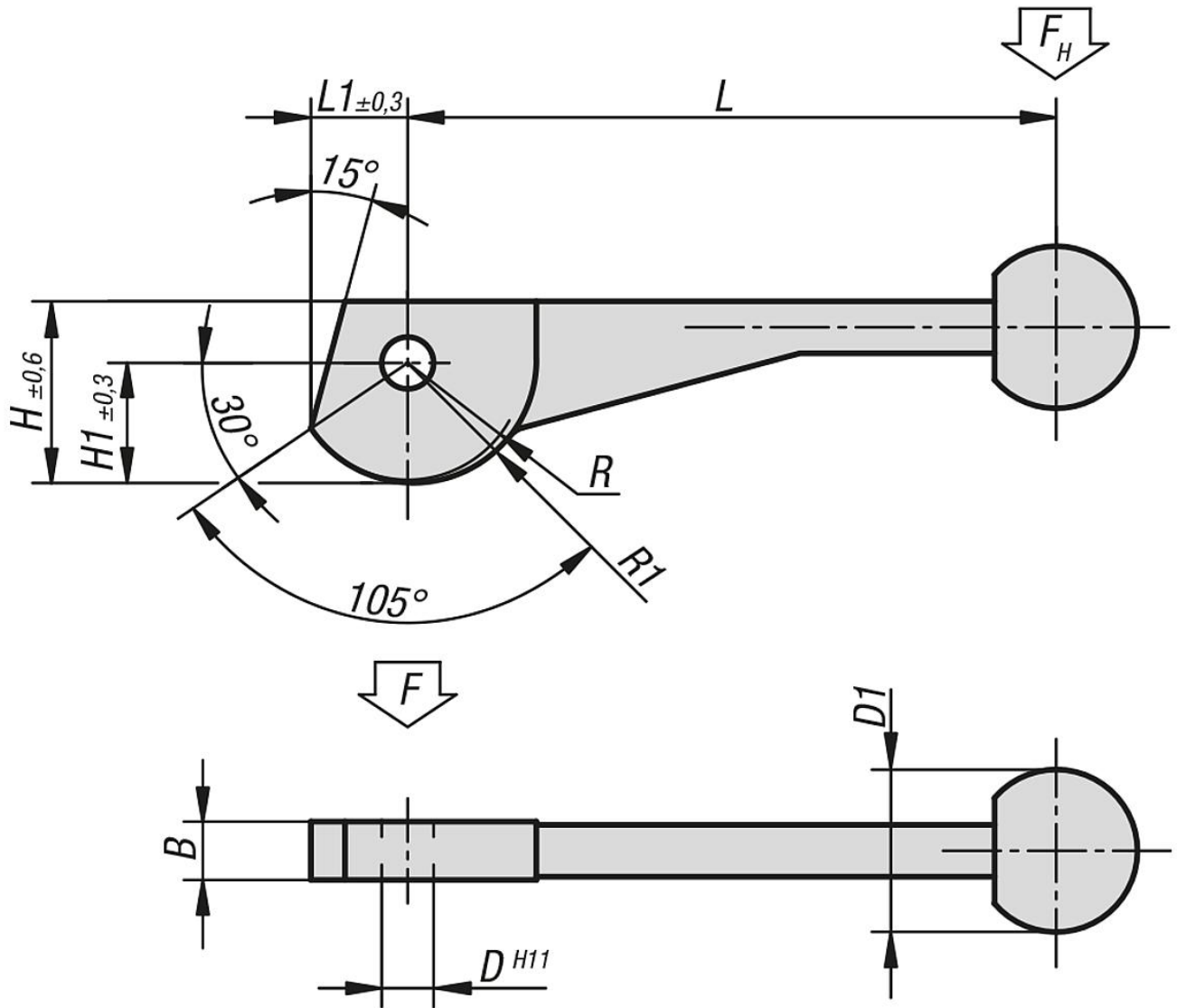
The cam lever is an eccentric lever that moves along a logarithmic spiral. Its clamping properties are even over the entire contact surface of the cam.

Force diagram



Cam levers single

Drawings



Overview of items

Cam levers, single

Order No.	L	L1	B	H	H1	D	D1	R	R1
K0008.08	104±2	14,9	9	28,2	18,7	8	25	17,2	19,2
K0008.10	123±2	18,6	12	34,8	23,3	10	30	21,5	24
K0008.12	146±3	24,3	14	43,8	30,3	12	30	28	31,2