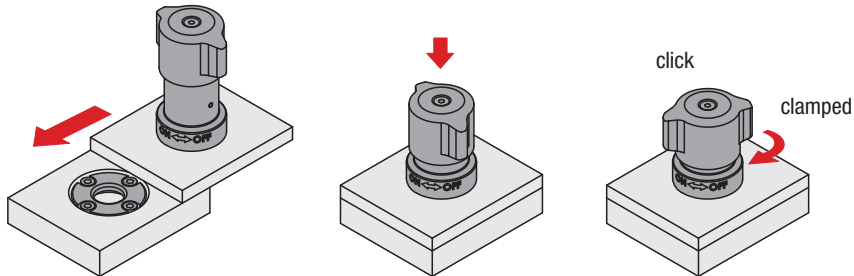


# Technical information for heavy-duty retractable ball lock pin with twist knob and matching locating bush

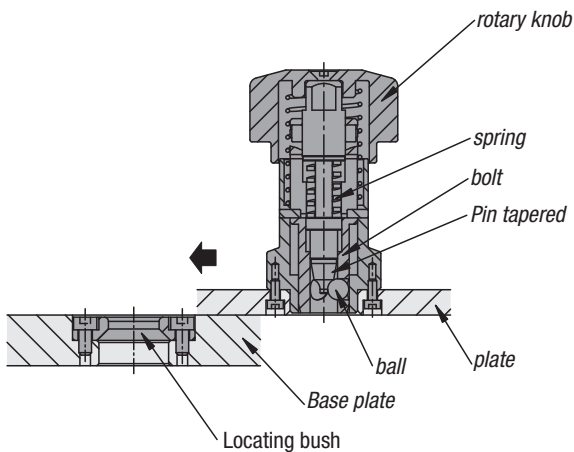
## 1. Application:



Check that the twist knob is in the „OFF“ position and that the pin is retracted. Place the ball lock pin over the receiving bush or insert it. Press the twist knob down and turn it to the „ON“ position. When fully clamped, an audible click will be heard.

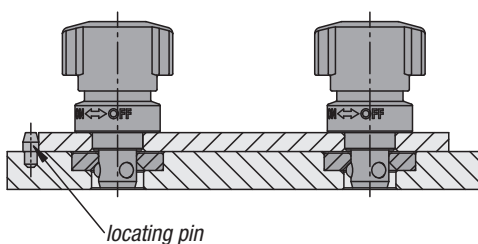
## 2. Function:

During clamping, the pin extends from the housing. The tapered pin presses the balls against the tapered surface of the locating bush and clamps the two plates. Upon release, the pin retracts into the housing.

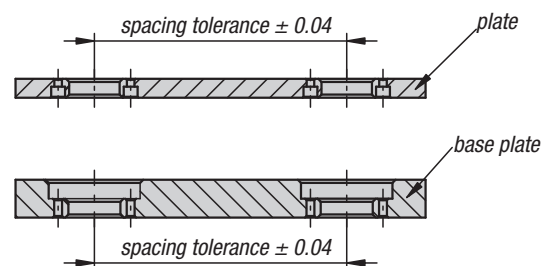


## Repeat accuracy:

A higher repeat accuracy can be achieved with the aid of additional locating pins (not supplied).

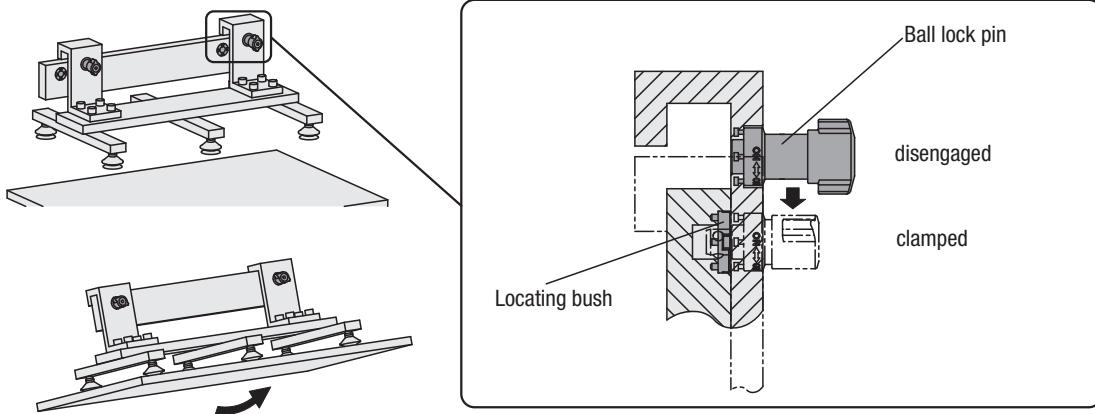


## Production tolerances:



## Application examples:

### Changing a fixture



### Changing the rollers on a packaging plant

