

Tombstones, grey cast iron, double-sided, with T-slots

Item description/product images



Description

Material:

GJL 300.

Version:

Support and mounting surfaces precision machined

Note:

Workholding cubes with T-slots are used for constructing modular fixtures on horizontal machines.

The precise longitudinal and transverse slot spacing ensures very high repeat clamping accuracy.

The workholding cubes conform to machine tables for machine tools acc. to DIN 55201 and JIS 6337-1980.

Please order locating pins for positioning subplates on machine tables acc. to DIN 55201 separately.

Ring bolts for hoisting are supplied.

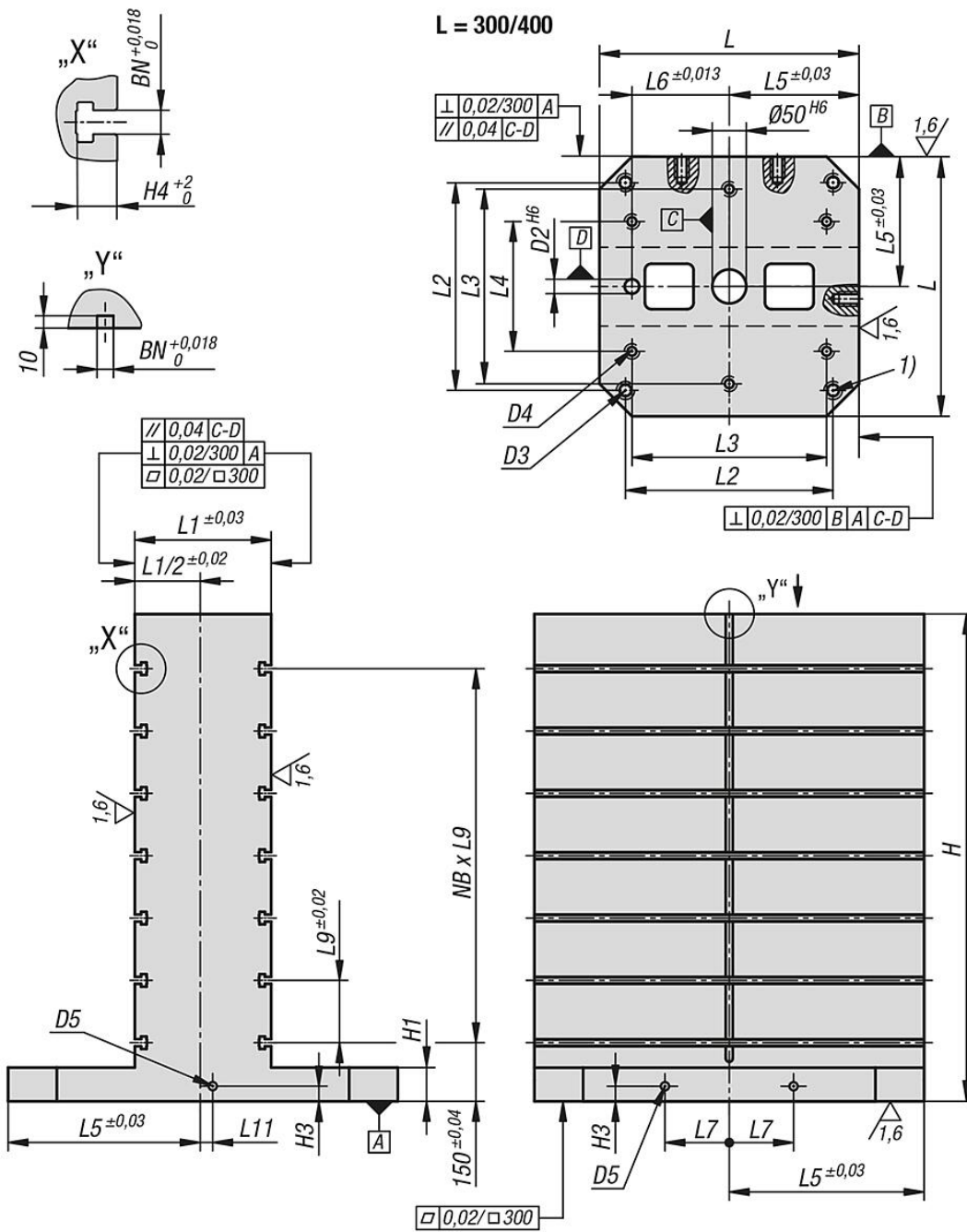
Other dimensions available on request.

Drawing reference:

1) hole for DIN 912 cap screw (D3/D4)

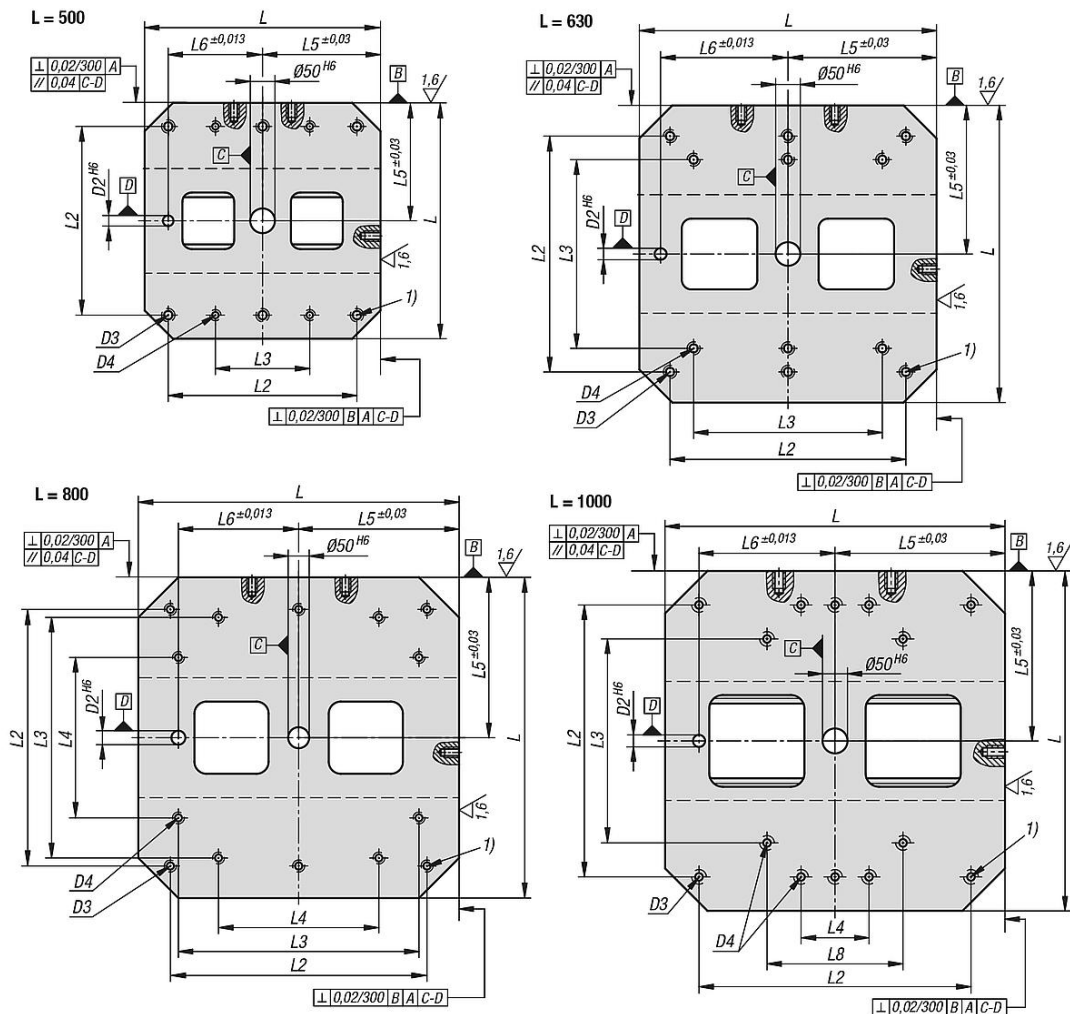
Tombstones, grey cast iron, double-sided, with T-slots

Drawings



Tombstones, grey cast iron, double-sided, with T-slots

Drawings



Overview of items

Tombstones, grey cast iron, double-sided, with T-slots

Order No.	L	H	H4	H1	D2	D3	D4	D5	H3	L1	L2	L3	L4	L5	L6	L7	L8	L9	L11	BN=Slot width	NB=No. across
K0803.314040050	400	500	23	50	20	M16	M12	M16	18	150	320	300	200	200	150	55	-	100	25	14	3
K0803.314040065	400	650	23	50	20	M16	M12	M16	18	150	320	300	200	200	150	55	-	100	25	14	4
K0803.314050060	500	600	23	50	20	M16	M12	M16	18	200	400	200	-	250	200	75	-	100	25	14	4
K0803.314050075	500	750	23	50	20	M16	M12	M16	18	200	400	200	-	250	200	75	-	100	25	14	5
K0803.314063070	630	700	23	50	25	M16	M16	M16	18	250	500	400	-	315	200	100	-	125	25	14	4
K0803.314063085	630	850	23	50	25	M16	M16	M16	18	250	500	400	-	315	200	100	-	125	25	14	5
K0803.314080080	800	800	23	50	25	M16	M16	M16	18	300	640	600	400	400	300	135	-	150	25	14	4
K0803.314080100	800	1000	23	50	25	M16	M16	M16	18	300	640	600	400	400	300	135	-	150	25	14	5
K0803.314100100	1000	1000	23	55	25	M20	M20	M16	18	350	800	600	200	500	400	165	400	160	25	14	5
K0803.314100125	1000	1250	23	55	25	M20	M20	M16	18	350	800	600	200	500	400	165	400	160	25	14	6
K0803.318040050	400	500	30	50	20	M16	M12	M16	18	150	320	300	200	200	150	55	-	100	25	18	3
K0803.318040065	400	650	30	50	20	M16	M12	M16	18	150	320	300	200	200	150	55	-	100	25	18	4
K0803.318050060	500	600	30	50	20	M16	M12	M16	18	200	400	200	-	250	200	75	-	100	25	18	4
K0803.318050075	500	750	30	50	20	M16	M12	M16	18	200	400	200	-	250	200	75	-	100	25	18	5
K0803.318063070	630	700	30	50	25	M16	M16	M16	18	250	500	400	-	315	200	100	-	125	25	18	4
K0803.318063085	630	850	30	50	25	M16	M16	M16	18	250	500	400	-	315	200	100	-	125	25	18	5
K0803.318080080	800	800	30	50	25	M16	M16	M16	18	300	640	600	400	400	300	135	-	150	25	18	4
K0803.318080100	800	1000	30	50	25	M16	M16	M16	18	300	640	600	400	400	300	135	-	150	25	18	5
K0803.318100100	1000	1000	30	55	25	M20	M20	M16	18	350	800	600	200	500	400	165	400	160	25	18	5

Tombstones, grey cast iron, double-sided, with T-slots

Overview of items

Order No.	L	H	H4	H1	D2	D3	D4	D5	H3	L1	L2	L3	L4	L5	L6	L7	L8	L9	L11	BN=Slot width	NB=No. across
K0803.318100125	1000	1250	30	55	25	M20	M20	M16	18	350	800	600	200	500	400	165	400	160	25	18	6