

## Handles, Form B

### Item description/product images



### Description

#### Material:

Knobs thermoset PF 31.

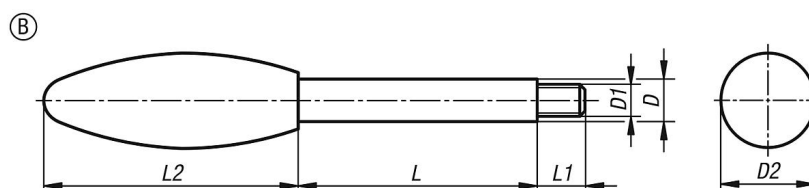
Rod steel 1.0718 or stainless steel 1.4305.

#### Version:

Thermoset black, high-gloss polished.

Steel black oxidised or bright stainless steel.

### Drawings



### Overview of items

Order No.	Main material	Form	D	D1	D2	L	L1	L2
K0179.708X35	steel	B	8	M6	23	35	9	60
K0179.708X50	steel	B	8	M6	23	50	9	60
K0179.708X65	steel	B	8	M6	23	65	9	60
K0179.710X50	steel	B	10	M8	26	50	13	70
K0179.710X65	steel	B	10	M8	26	65	13	70
K0179.710X80	steel	B	10	M8	26	80	13	70
K0179.710X100	steel	B	10	M8	26	100	13	70
K0179.712X65	steel	B	12	M10	35	65	15	85
K0179.712X80	steel	B	12	M10	35	80	15	85
K0179.712X100	steel	B	12	M10	35	100	15	85
K0179.712X125	steel	B	12	M10	35	125	15	85
K0179.714X80	steel	B	14	M12	35	80	16	85
K0179.714X100	steel	B	14	M12	35	100	16	85
K0179.714X125	steel	B	14	M12	35	125	16	85
K0179.714X160	steel	B	14	M12	35	160	16	85
K0179.1708X35	stainless steel	B	8	M6	23	35	9	60
K0179.1708X50	stainless steel	B	8	M6	23	50	9	60
K0179.1708X65	stainless steel	B	8	M6	23	65	9	60
K0179.1710X50	stainless steel	B	10	M8	26	50	13	70
K0179.1710X65	stainless steel	B	10	M8	26	65	13	70
K0179.1710X80	stainless steel	B	10	M8	26	80	13	70
K0179.1710X100	stainless steel	B	10	M8	26	100	13	70
K0179.1712X65	stainless steel	B	12	M10	35	65	15	85
K0179.1712X80	stainless steel	B	12	M10	35	80	15	85
K0179.1712X100	stainless steel	B	12	M10	35	100	15	85
K0179.1712X125	stainless steel	B	12	M10	35	125	15	85
K0179.1714X80	stainless steel	B	14	M12	35	80	16	85
K0179.1714X100	stainless steel	B	14	M12	35	100	16	85
K0179.1714X125	stainless steel	B	14	M12	35	125	16	85
K0179.1714X160	stainless steel	B	14	M12	35	160	16	85

