

Collets for external or internal clamping

Item description/product images



Description

Material, version:

High-strength aluminium, red (external clamping) or clear (internal clamping), anodised.

Note:

Collet for clamping external or internal contours. The contour of the workpiece to be clamped is machined into the collet. Free-form and asymmetrical contours can be clamped.

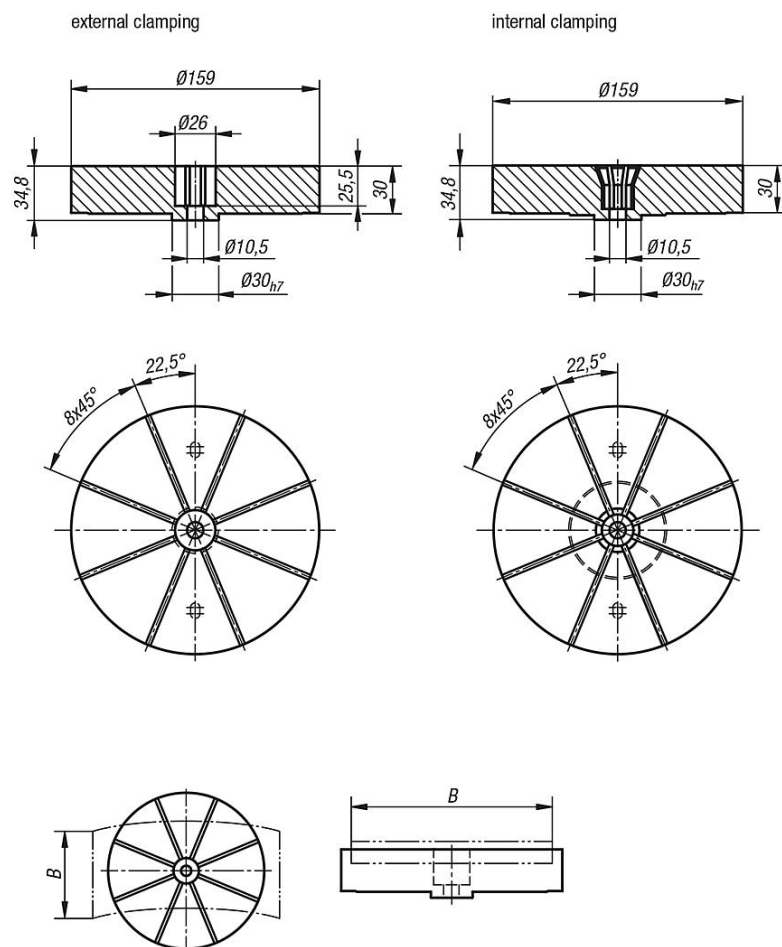
Clamping travel 0.2 mm.

Tension cone K0502.1024 is required for internal clamping collets.

Accessory:

Tension cone K0502.1024

Drawings



The workpiece width "B" should be maximum 90% of the collet diameter.
In special cases the workpiece may also project over the collet.

Collets for external or internal clamping

Overview of items

Collets for external or internal clamping

Order No.	Version 2	Clamping range min. - max.	Milling depth min./max.	Workpiece weight max. (kg)
K0502.116030	for external clamping	Ø 30 - Ø 140	1-20	25
K0502.216030	for internal clamping	Ø 30 - Ø 140	1-20	25