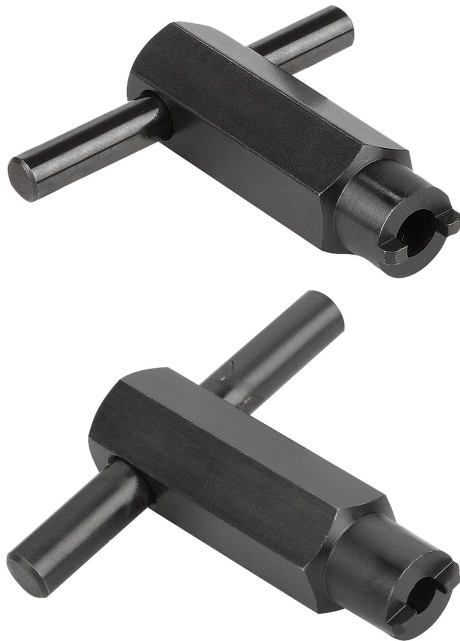


Assembly key

Item description/product images



Description

Overview of items

| Order No. | Image | Suitable for spring plungers with hexagon socket and thrust pin |
|-----------|---|--|
| K0317.903 |  | D=M3 |
| K0317.904 |  | D=M4 |
| K0317.905 |  | D=M5 |
| K0317.906 |  | D=M6 |
| K0317.908 |  | D=M8 |
| K0317.910 |  | D=M10 |
| K0317.912 |  | D=M12 |
| K0317.916 |  | D=M16 |

