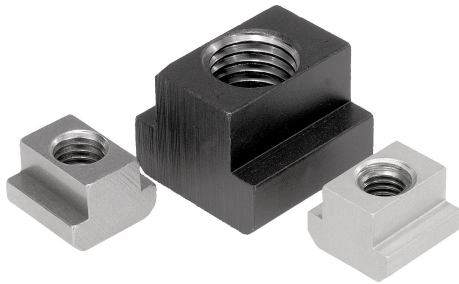


## Nuts for T-slots DIN 508 enhanced

### Item description/product images



### Description

#### Material:

Carbon steel grade 10, EN AW-7075 or stainless steel 1.4571.

#### Version:

Steel tempered (black).

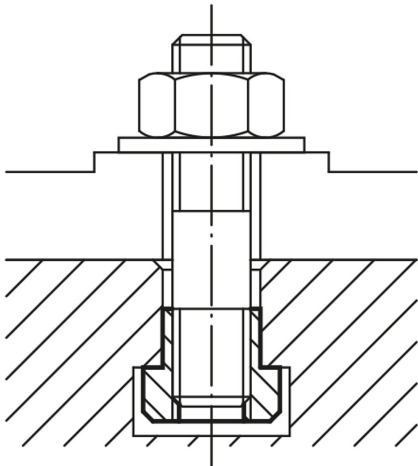
Aluminium and stainless steel bright.

#### Note:

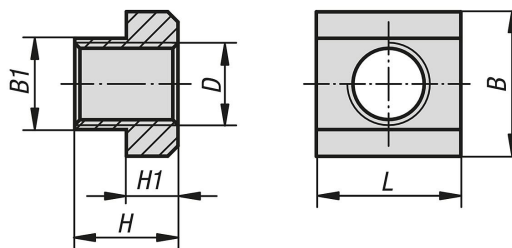
Aluminium T-slot nuts have steel threaded inserts.

Strength of stainless steel version:

$R_m = 700 \text{ N/mm}^2$ ,  $R_{p0,2} = 450 \text{ N/mm}^2$ .



### Drawings



### Overview of items

#### Nuts for T-slots to DIN 508 enhanced

Order No.	Main material	Surface finish body	Slot width	B	B1	D	H	H1	L
K0377.05	high carbon steel	tempered (black)	6	10	5,6	M5	8	4	10
K0377.06	high carbon steel	tempered (black)	8	13	7,6	M6	10	6	13
K0377.061	high carbon steel	tempered (black)	10	15	9,6	M6	12	6	15
K0377.08	high carbon steel	tempered (black)	10	15	9,6	M8	12	6	15
K0377.081	high carbon steel	tempered (black)	12	18	11,6	M8	14	7	18
K0377.082	high carbon steel	tempered (black)	14	22	13,6	M8	16	8	22
K0377.10	high carbon steel	tempered (black)	12	18	11,6	M10	14	7	18
K0377.101	high carbon steel	tempered (black)	14	22	13,6	M10	16	8	22
K0377.12	high carbon steel	tempered (black)	14	22	13,6	M12	16	8	22
K0377.121	high carbon steel	tempered (black)	16	25	15,6	M12	18	9	25
K0377.122	high carbon steel	tempered (black)	18	28	17,6	M12	20	10	28
K0377.123	high carbon steel	tempered (black)	20	32	19,6	M12	24	12	32
K0377.124	high carbon steel	tempered (black)	22	35	21,6	M12	28	14	35
K0377.14	high carbon steel	tempered (black)	16	25	15,6	M14	18	9	25

## Nuts for T-slots DIN 508 enhanced

### Overview of items

Order No.	Main material	Surface finish body	Slot width	B	B1	D	H	H1	L
K0377.141	high carbon steel	tempered (black)	18	28	17,6	M14	20	10	28
K0377.16	high carbon steel	tempered (black)	18	28	17,6	M16	20	10	28
K0377.161	high carbon steel	tempered (black)	20	32	19,6	M16	24	12	32
K0377.163	high carbon steel	tempered (black)	24	40	23,6	M16	32	16	40
K0377.164	high carbon steel	tempered (black)	28	44	27,6	M16	36	18	44
K0377.18	high carbon steel	tempered (black)	20	32	19,6	M18	24	12	32
K0377.181	high carbon steel	tempered (black)	22	35	21,6	M18	28	14	35
K0377.20	high carbon steel	tempered (black)	22	35	21,6	M20	28	14	35
K0377.201	high carbon steel	tempered (black)	24	40	23,6	M20	32	16	40
K0377.202	high carbon steel	tempered (black)	28	44	27,6	M20	36	18	44
K0377.22	high carbon steel	tempered (black)	24	40	23,6	M22	32	16	40
K0377.24	high carbon steel	tempered (black)	28	44	27,6	M24	36	18	44
K0377.241	high carbon steel	tempered (black)	36	54	35,5	M24	44	22	54
K0377.27	high carbon steel	tempered (black)	32	50	31,5	M27	40	20	50
K0377.30	high carbon steel	tempered (black)	36	54	35,5	M30	44	22	54
K0377.36	high carbon steel	tempered (black)	42	65	41,5	M36	52	26	65
K0377.204	aluminium	bright	6	10	5,6	M4	8	4	10
K0377.206	aluminium	bright	8	13	7,6	M6	10	6	13
K0377.2061	aluminium	bright	10	15	9,6	M6	12	6	15
K0377.208	aluminium	bright	12	18	11,6	M8	14	7	18
K0377.210	aluminium	bright	14	22	13,6	M10	16	8	22
K0377.216	aluminium	bright	22	35	21,6	M16	28	14	35
K0377.806	stainless steel A4	bright	8	13	7,6	M6	10	6	13
K0377.808	stainless steel A4	bright	10	15	9,6	M8	12	6	15
K0377.810	stainless steel A4	bright	12	18	11,6	M10	14	7	18
K0377.812	stainless steel A4	bright	14	22	13,6	M12	16	8	22
K0377.814	stainless steel A4	bright	16	25	15,6	M14	18	9	25
K0377.816	stainless steel A4	bright	18	28	17,6	M16	20	10	28